

**KCNS1 antibody - N-terminal region**  
**Rabbit Polyclonal Antibody**  
**Catalog # AI10791****Specification**

---

**KCNS1 antibody - N-terminal region - Product Information**

Application	WB
Primary Accession	<a href="#">A4K2N8</a>
Other Accession	<a href="#">NM_002251</a> , <a href="#">NP_002242</a>
Reactivity	Human, Mouse, Rat, Rabbit, Zebrafish, Horse, Bovine, Dog
Predicted Host	Human, Mouse, Rat, Chicken, Bovine
Clonality	Rabbit
Calculated MW	Polyclonal 58kDa KDa

**KCNS1 antibody - N-terminal region - Additional Information****Gene ID** 469951**Alias Symbol** **KV9.1****Other Names**

Potassium voltage-gated channel subfamily S member 1, Delayed-rectifier K(+) channel alpha subunit 1, KCNS1

**Format**

Liquid. Purified antibody supplied in 1x PBS buffer with 0.09% (w/v) sodium azide and 2% sucrose.

**Reconstitution & Storage**

Add 50 ul of distilled water. Final anti-KCNS1 antibody concentration is 1 mg/ml in PBS buffer with 2% sucrose. For longer periods of storage, store at 20°C. Avoid repeat freeze-thaw cycles.

**Precautions**

KCNS1 antibody - N-terminal region is for research use only and not for use in diagnostic or therapeutic procedures.

**KCNS1 antibody - N-terminal region - Protein Information****Name** KCNS1 {ECO:0000250|UniProtKB:Q96KK3}**Function**

Potassium channel regulatory subunit that modulate the delayed rectifier voltage-gated potassium channel activity of KCNB1 and KCNB2 by altering their kinetics, expression levels, and shifting the half-inactivation potential to more polarized values. While it does not form functional channels on its own, it can form functional heterotetrameric channels with KCNB1 and KCNB2 (By similarity). Each regulatory subunit has unique regulatory properties that can lead to extensive inhibition, significant changes in kinetics, and/or substantial shifts in the voltage dependencies of the inactivation process (By similarity).

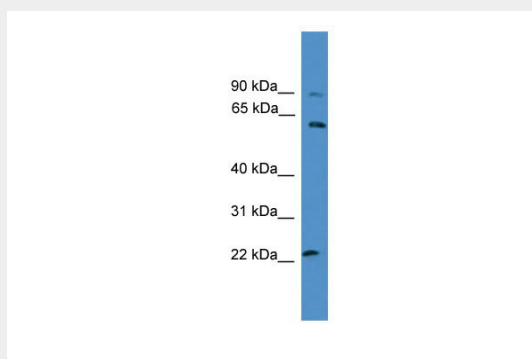
**Cellular Location**

Cell membrane {ECO:0000250|UniProtKB:Q96KK3}; Multi-pass membrane protein {ECO:0000250|UniProtKB:Q96KK3}. Note=May not reach the plasma membrane but remain in an intracellular compartment in the absence of KCNB1 or KCNB2 {ECO:0000250|UniProtKB:Q96KK3}

**KCNS1 antibody - N-terminal region - Protocols**

Provided below are standard protocols that you may find useful for product applications.

- [Western Blot](#)
- [Blocking Peptides](#)
- [Dot Blot](#)
- [Immunohistochemistry](#)
- [Immunofluorescence](#)
- [Immunoprecipitation](#)
- [Flow Cytometry](#)
- [Cell Culture](#)

**KCNS1 antibody - N-terminal region - Images**

WB Suggested Anti-KCNS1 Antibody Titration: 0.2-1 µg/ml

ELISA Titer: 1:312500

Positive Control: HepG2 cell lysate