

KCNG1 antibody - N-terminal region
Rabbit Polyclonal Antibody
Catalog # AI10843**Specification**

KCNG1 antibody - N-terminal region - Product Information

| | |
|-------------------|---|
| Application | WB |
| Primary Accession | O9UIX4 |
| Other Accession | NM_002237 , NP_002228 |
| Reactivity | Human, Mouse, Rat, Rabbit, Pig, Horse, Bovine, Dog |
| Predicted Host | Mouse, Rat, Pig, Chicken, Horse, Dog |
| Clonality | Rabbit |
| Calculated MW | Polyclonal 58kDa KDa |

KCNG1 antibody - N-terminal region - Additional Information**Gene ID** 3755**Alias Symbol** **K13, KCNG, KV6.1, MGC12878, kH2****Other Names**

Potassium voltage-gated channel subfamily G member 1, Voltage-gated potassium channel subunit Kv6.1, kH2, KCNG1

Format

Liquid. Purified antibody supplied in 1x PBS buffer with 0.09% (w/v) sodium azide and 2% sucrose.

Reconstitution & Storage

Add 50 ul of distilled water. Final anti-KCNG1 antibody concentration is 1 mg/ml in PBS buffer with 2% sucrose. For longer periods of storage, store at 20°C. Avoid repeat freeze-thaw cycles.

Precautions

KCNG1 antibody - N-terminal region is for research use only and not for use in diagnostic or therapeutic procedures.

KCNG1 antibody - N-terminal region - Protein Information**Name** KCNG1**Function**

Potassium channel subunit that does not form functional channels by itself. Can form functional heterotetrameric channels with KCNB1; modulates the delayed rectifier voltage-gated potassium channel activation and deactivation rates of KCNB1 (PubMed:19074135).

Cellular Location

Cell membrane; Multi-pass membrane protein. Note=Colocalizes with KCNB1 at the plasma

membrane (PubMed:19074135)

Tissue Location

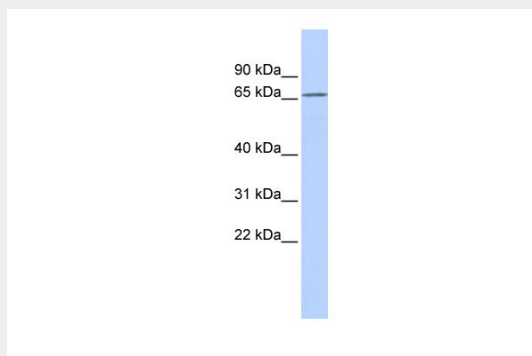
Expressed in brain and placenta, and at much lower levels in kidney and pancreas
(PubMed:9434767)

KCNG1 antibody - N-terminal region - Protocols

Provided below are standard protocols that you may find useful for product applications.

- [Western Blot](#)
- [Blocking Peptides](#)
- [Dot Blot](#)
- [Immunohistochemistry](#)
- [Immunofluorescence](#)
- [Immunoprecipitation](#)
- [Flow Cytometry](#)
- [Cell Culture](#)

KCNG1 antibody - N-terminal region - Images



WB Suggested Anti-KCNG1 Antibody Titration: 0.2-1 µg/ml

ELISA Titer: 1:62500

Positive Control: MCF7 cell lysate

KCNG1 antibody - N-terminal region - References

Gutman, G.A., (2005) Pharmacol. Rev. 57 (4), 473-508 Reconstitution and Storage: For short term use, store at 2-8°C up to 1 week. For long term storage, store at -20°C in small aliquots to prevent freeze-thaw cycles.