

KCNG4 antibody - N-terminal region
Rabbit Polyclonal Antibody
Catalog # AI10845**Specification**

KCNG4 antibody - N-terminal region - Product Information

Application	WB
Primary Accession	Q8TDN1
Other Accession	NM_172347 , NP_758857
Reactivity	Human
Predicted	Human
Host	Rabbit
Clonality	Polyclonal
Calculated MW	59kDa KDa

KCNG4 antibody - N-terminal region - Additional Information**Gene ID** 93107**Alias Symbol** KV6.3, KV6.4, MGC129609, MGC4558**Other Names**

Potassium voltage-gated channel subfamily G member 4, Voltage-gated potassium channel subunit Kv6.4, KCNG4, KCNG3

Format

Liquid. Purified antibody supplied in 1x PBS buffer with 0.09% (w/v) sodium azide and 2% sucrose.

Reconstitution & Storage

Add 50 ul of distilled water. Final anti-KCNG4 antibody concentration is 1 mg/ml in PBS buffer with 2% sucrose. For longer periods of storage, store at 20°C. Avoid repeat freeze-thaw cycles.

Precautions

KCNG4 antibody - N-terminal region is for research use only and not for use in diagnostic or therapeutic procedures.

KCNG4 antibody - N-terminal region - Protein Information**Name** KCNG4**Synonyms** KCNG3**Function**

Potassium channel subunit that does not form functional channels by itself. Can form functional heterotetrameric channels with KCNB1; modulates the delayed rectifier voltage-gated potassium channel activation and deactivation rates of KCNB1 (PubMed:19074135).

Cellular Location

Cell membrane; Multi-pass membrane protein. Note=Has to be associated with KCNB1 or possibly another partner to get inserted in the plasma membrane. Colocalizes with KCNB1 at the plasma membrane. Remains intracellular in the absence of KCNB1 (PubMed:19074135)

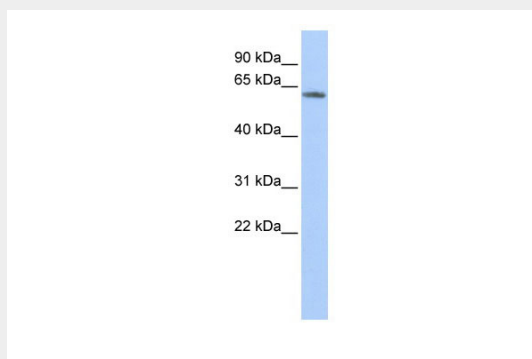
Tissue Location

Highly expressed in brain, and at lower levels in liver, small intestine and colon

KCNG4 antibody - N-terminal region - Protocols

Provided below are standard protocols that you may find useful for product applications.

- [Western Blot](#)
- [Blocking Peptides](#)
- [Dot Blot](#)
- [Immunohistochemistry](#)
- [Immunofluorescence](#)
- [Immunoprecipitation](#)
- [Flow Cytometry](#)
- [Cell Culture](#)

KCNG4 antibody - N-terminal region - Images

WB Suggested Anti-KCNG4 Antibody Titration: 0.2-1 µg/ml

ELISA Titer: 1:62500

Positive Control: 721_B cell lysate

KCNG4 antibody - N-terminal region - References

Gutman, G.A., (2005) Pharmacol. Rev. 57 (4), 473-508 Reconstitution and Storage: For short term use, store at 2-8°C up to 1 week. For long term storage, store at -20°C in small aliquots to prevent freeze-thaw cycles.