

**KCNH6 antibody - middle region**  
**Rabbit Polyclonal Antibody**  
**Catalog # AI10847****Specification**

---

**KCNH6 antibody - middle region - Product Information**

Application	WB
Primary Accession	<a href="#">O9H252</a>
Other Accession	<a href="#">NM_030779</a> , <a href="#">NP_110406</a>
Reactivity	Human, Mouse, Rat, Rabbit, Zebrafish, Horse, Bovine, Dog
Predicted	Human, Mouse, Rat, Rabbit, Zebrafish, Pig, Horse, Bovine, Dog
Host	Rabbit
Clonality	Polyclonal
Calculated MW	109kDa KDa

**KCNH6 antibody - middle region - Additional Information****Gene ID** 81033**Alias Symbol** **ERG2, HERG2, Kv11.2****Other Names**

Potassium voltage-gated channel subfamily H member 6, Ether-a-go-go-related gene potassium channel 2, ERG-2, Eag-related protein 2, Ether-a-go-go-related protein 2, hERG-2, hERG2, Voltage-gated potassium channel subunit Kv11.2, KCNH6, ERG2

**Format**

Liquid. Purified antibody supplied in 1x PBS buffer with 0.09% (w/v) sodium azide and 2% sucrose.

**Reconstitution & Storage**

Add 50 ul of distilled water. Final anti-KCNH6 antibody concentration is 1 mg/ml in PBS buffer with 2% sucrose. For longer periods of storage, store at 20°C. Avoid repeat freeze-thaw cycles.

**Precautions**

KCNH6 antibody - middle region is for research use only and not for use in diagnostic or therapeutic procedures.

**KCNH6 antibody - middle region - Protein Information****Name** KCNH6**Synonyms** ERG2**Function**

Pore-forming (alpha) subunit of voltage-gated potassium channel. Elicits a slowly activating, rectifying current (By similarity). Channel properties may be modulated by cAMP and subunit assembly.

**Cellular Location**

Membrane; Multi-pass membrane protein.

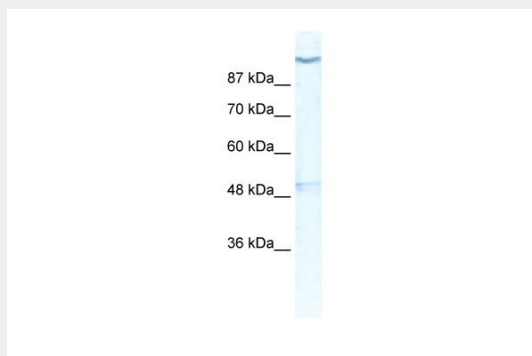
**Tissue Location**

Expressed in prolactin-secreting adenomas.

**KCNH6 antibody - middle region - Protocols**

Provided below are standard protocols that you may find useful for product applications.

- [Western Blot](#)
- [Blocking Peptides](#)
- [Dot Blot](#)
- [Immunohistochemistry](#)
- [Immunofluorescence](#)
- [Immunoprecipitation](#)
- [Flow Cytometry](#)
- [Cell Culture](#)

**KCNH6 antibody - middle region - Images**

WB Suggested Anti-KCNH6 Antibody Titration: 0.2-1 µg/ml

ELISA Titer: 1:12500

Positive Control: HepG2 cell lysate

**KCNH6 antibody - middle region - References**

Bauer, C.K., et al., (2003) Pflugers Arch. 445 (5), 589-600  
Reconstitution and Storage: For short term use, store at 2-8°C up to 1 week. For long term storage, store at -20°C in small aliquots to prevent freeze-thaw cycles.