

KCNIP2 antibody - middle region
Rabbit Polyclonal Antibody
Catalog # AI10849**Specification**

KCNIP2 antibody - middle region - Product Information

Application	WB
Primary Accession	O9NS61
Other Accession	NM_173191 , NP_775283
Reactivity	Human, Mouse, Rat, Rabbit, Zebrafish, Pig, Horse, Bovine, Dog
Predicted	Human, Mouse, Rat, Rabbit, Pig, Chicken, Bovine
Host	Rabbit
Clonality	Polyclonal
Calculated MW	31kDa kDa

KCNIP2 antibody - middle region - Additional Information**Gene ID** 30819**Alias Symbol** [DKFZp566L1246](#), [KCHIP2](#), [MGC17241](#)**Other Names**

Kv channel-interacting protein 2, KCHIP2, A-type potassium channel modulatory protein 2, Cardiac voltage-gated potassium channel modulatory subunit, Potassium channel-interacting protein 2, KCNIP2, KCHIP2

Format

Liquid. Purified antibody supplied in 1x PBS buffer with 0.09% (w/v) sodium azide and 2% sucrose.

Reconstitution & Storage

Add 50 ul of distilled water. Final anti-KCNIP2 antibody concentration is 1 mg/ml in PBS buffer with 2% sucrose. For longer periods of storage, store at 20°C. Avoid repeat freeze-thaw cycles.

Precautions

KCNIP2 antibody - middle region is for research use only and not for use in diagnostic or therapeutic procedures.

KCNIP2 antibody - middle region - Protein Information**Name** KCNIP2 ([HGNC:15522](#))**Function**Regulatory subunit of Kv4/D (Shal)-type voltage-gated rapidly inactivating A-type potassium channels (PubMed: <http://www.uniprot.org/citations/10676964> target="_blank">10676964, PubMed: <http://www.uniprot.org/citations/11287421> target="_blank">11287421, PubMed: <http://www.uniprot.org/citations/11684073> target="_blank">11684073, PubMed: <http://www.uniprot.org/citations/12297301> target="_blank">12297301)

target="_blank">12297301, PubMed:14623880, PubMed:34997220). Modulates channel density, inactivation kinetics and rate of recovery from inactivation in a calcium-dependent and isoform- specific manner (PubMed:10676964, PubMed:11287421, PubMed:11684073, PubMed:12297301, PubMed:14623880, PubMed:34997220). Involved in KCND2 and KCND3 trafficking to the cell surface (PubMed:12829703). May be required for the expression of I(To) currents in the heart (By similarity).

Cellular Location

[Isoform 1]: Cell membrane {ECO:0000250|UniProtKB:Q9JM59}; Lipid-anchor {ECO:0000250|UniProtKB:Q9JM59}. Note=Detected on lipid rafts (By similarity). {ECO:0000250|UniProtKB:Q9JM59} [Isoform 6]: Cell membrane {ECO:0000250|UniProtKB:Q9JM59}; Lipid-anchor {ECO:0000250|UniProtKB:Q9JM59}

Tissue Location

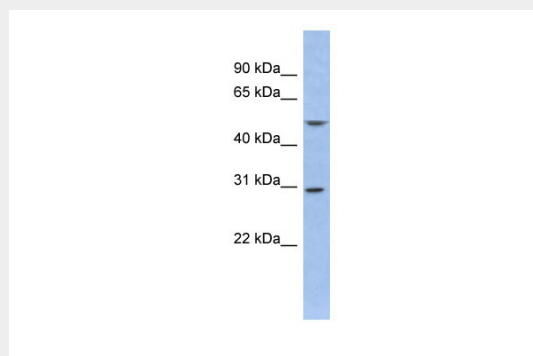
Expressed in brain. Colocalizes with KCND2 in excitatory neurons including cortical and hippocampal CA1 pyramidal cells. Isoform 3 is expressed in heart and in umbilical vein endothelial cells. Not expressed in fetal heart

KCNIP2 antibody - middle region - Protocols

Provided below are standard protocols that you may find useful for product applications.

- [Western Blot](#)
- [Blocking Peptides](#)
- [Dot Blot](#)
- [Immunohistochemistry](#)
- [Immunofluorescence](#)
- [Immunoprecipitation](#)
- [Flow Cytometry](#)
- [Cell Culture](#)

KCNIP2 antibody - middle region - Images



WB Suggested Anti-KCNIP2 Antibody Titration: 0.2-1 µg/ml
ELISA Titer: 1:312500

Positive Control: Human Stomach

KCNIP2 antibody - middle region - References

Han,W., (2006) J. Biol. Chem. 281 (37), 27134-27144 Reconstitution and Storage:For short term use, store at 2-8C up to 1 week. For long term storage, store at -20C in small aliquots to prevent freeze-thaw cycles.