

**HMG20B antibody - middle region**  
**Rabbit Polyclonal Antibody**  
**Catalog # AI10883****Specification**

---

**HMG20B antibody - middle region - Product Information**

Application	WB
Primary Accession	<a href="#">O9P0W2</a>
Other Accession	<a href="#">NM_006339</a> , <a href="#">NP_006330</a>
Reactivity	Human, Mouse, Rat, Bovine
Predicted	Human, Mouse, Rat, Bovine
Host	Rabbit
Clonality	Polyclonal
Calculated MW	37kDa KDa

**HMG20B antibody - middle region - Additional Information****Gene ID** 10362

Alias Symbol	BRAF25, BRAF35, FLJ26127, HMGX2, PP7706, SMARCE1r, SOXL, pp8857, HMGXB2
--------------	---

**Other Names**

SWI/SNF-related matrix-associated actin-dependent regulator of chromatin subfamily E member 1-related, SMARCE1-related protein, BRCA2-associated factor 35, HMG box-containing protein 20B, HMG domain-containing protein 2, HMG domain-containing protein HMGX2, Sox-like transcriptional factor, Structural DNA-binding protein BRAF35, HMG20B, BRAF35, HMGX2, HMGXB2, SMARCE1R

**Format**

Liquid. Purified antibody supplied in 1x PBS buffer with 0.09% (w/v) sodium azide and 2% sucrose.

**Reconstitution & Storage**

Add 50 ul of distilled water. Final anti-HMG20B antibody concentration is 1 mg/ml in PBS buffer with 2% sucrose. For longer periods of storage, store at 20°C. Avoid repeat freeze-thaw cycles.

**Precautions**

HMG20B antibody - middle region is for research use only and not for use in diagnostic or therapeutic procedures.

**HMG20B antibody - middle region - Protein Information**

**Name** HMG20B

**Synonyms** BRAF35, HMGX2, HMGXB2, SMARCE1R

**Function**

Required for correct progression through G2 phase of the cell cycle and entry into mitosis. Required for RCOR1/CoREST mediated repression of neuronal specific gene promoters.

**Cellular Location**

Nucleus. Chromosome. Note=Localized to condensed chromosomes in mitosis in conjunction with BRCA2

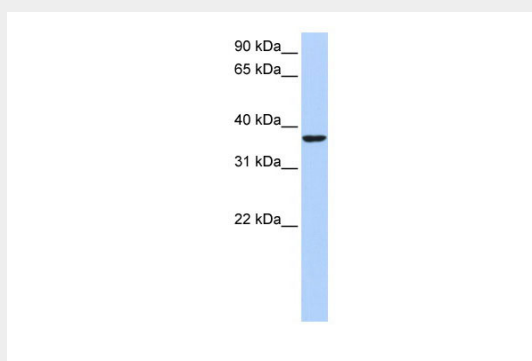
**Tissue Location**

Ubiquitously expressed in adult tissues.

**HMG20B antibody - middle region - Protocols**

Provided below are standard protocols that you may find useful for product applications.

- [Western Blot](#)
- [Blocking Peptides](#)
- [Dot Blot](#)
- [Immunohistochemistry](#)
- [Immunofluorescence](#)
- [Immunoprecipitation](#)
- [Flow Cytometry](#)
- [Cell Culture](#)

**HMG20B antibody - middle region - Images**

WB Suggested Anti-HMG20B Antibody Titration: 0.2-1 µg/ml

ELISA Titer: 1:62500

Positive Control: HepG2 cell lysate

**HMG20B antibody - middle region - References**

Schlierf, B., (2007) Neuropathol. Appl. Neurobiol. 33 (6), 621-630 Reconstitution and Storage: For short term use, store at 2-8°C up to 1 week. For long term storage, store at -20°C in small aliquots to prevent freeze-thaw cycles.