

ZNF238 antibody - N-terminal region
Rabbit Polyclonal Antibody
Catalog # AI10884**Specification**

ZNF238 antibody - N-terminal region - Product Information

Application	WB
Primary Accession	Q99592
Other Accession	NM_006352 , NP_006343
Reactivity	Human, Mouse, Rat, Rabbit, Zebrafish, Horse, Bovine, Dog
Predicted	Rabbit, Chicken
Host	Rabbit
Clonality	Polyclonal
Calculated MW	58kDa KDa

ZNF238 antibody - N-terminal region - Additional Information**Gene ID** 10472**Alias Symbol** C2H2-171, RP58, TAZ-1, ZBTB18, ZNF238**Other Names**

Zinc finger and BTB domain-containing protein 18, 58 kDa repressor protein, Transcriptional repressor RP58, Translin-associated zinc finger protein 1, TAZ-1, Zinc finger protein 238, Zinc finger protein C2H2-171, ZBTB18, RP58, TAZ1, ZNF238

Format

Liquid. Purified antibody supplied in 1x PBS buffer with 0.09% (w/v) sodium azide and 2% sucrose.

Reconstitution & Storage

Add 50 ul of distilled water. Final anti-ZNF238 antibody concentration is 1 mg/ml in PBS buffer with 2% sucrose. For longer periods of storage, store at 20°C. Avoid repeat freeze-thaw cycles.

Precautions

ZNF238 antibody - N-terminal region is for research use only and not for use in diagnostic or therapeutic procedures.

ZNF238 antibody - N-terminal region - Protein Information**Name** ZBTB18**Synonyms** RP58, TAZ1, ZNF238**Function**

Transcriptional repressor that plays a role in various developmental processes such as myogenesis and brain development. Plays a key role in myogenesis by directly repressing the expression of ID2 and ID3, 2 inhibitors of skeletal myogenesis. Also involved in controlling cell division of progenitor cells and regulating the survival of postmitotic cortical neurons. Specifically binds the

consensus DNA sequence 5'-[AC]ACATCTG[GT][AC]-3' which contains the E box core, and acts by recruiting chromatin remodeling multiprotein complexes. May also play a role in the organization of chromosomes in the nucleus.

Cellular Location

Nucleus. Note=Associates with condensed chromatin

Tissue Location

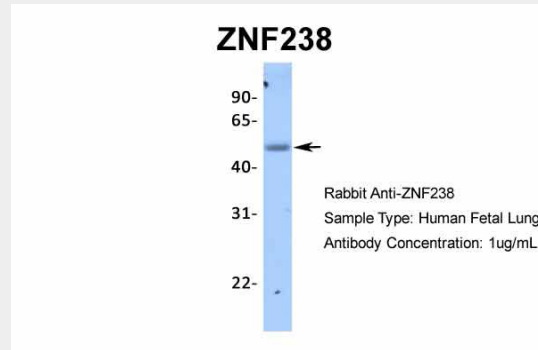
Lymphoid tissues, testis, heart, brain, skeletal muscle, and pancreas and, at much lower level, other tissues

ZNF238 antibody - N-terminal region - Protocols

Provided below are standard protocols that you may find useful for product applications.

- [Western Blot](#)
- [Blocking Peptides](#)
- [Dot Blot](#)
- [Immunohistochemistry](#)
- [Immunofluorescence](#)
- [Immunoprecipitation](#)
- [Flow Cytometry](#)
- [Cell Culture](#)

ZNF238 antibody - N-terminal region - Images

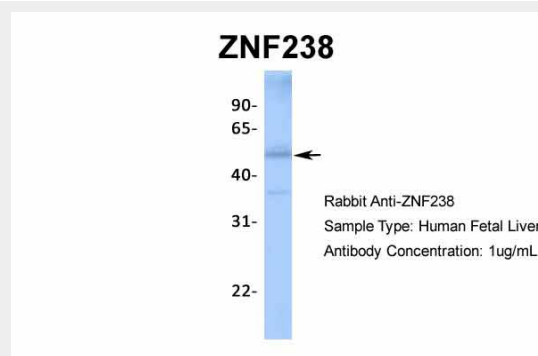


Host: Rabbit

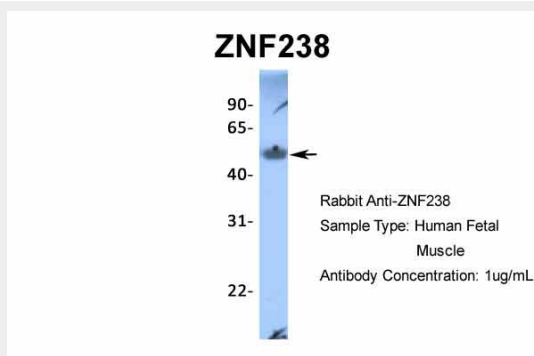
Target Name: ZNF238

Sample Tissue: Human Fetal Lung

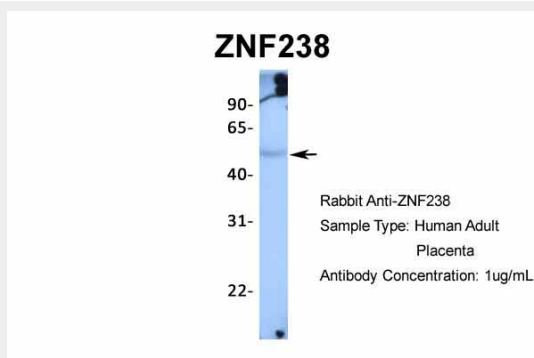
Antibody Dilution: 1.0µg/ml



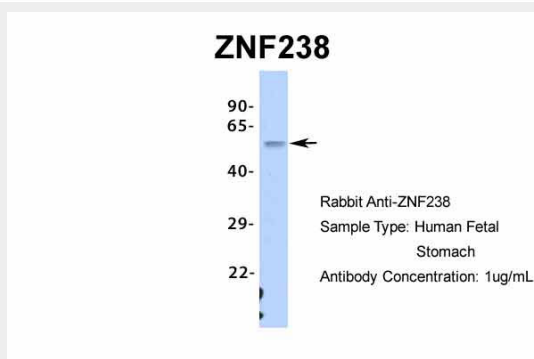
Host: Rabbit
Target Name: ZNF238
Sample Tissue: Human Fetal Liver
Antibody Dilution: 1.0µg/ml



Host: Rabbit
Target Name: ZNF238
Sample Tissue: Human Fetal Muscle
Antibody Dilution: 1.0µg/ml



Host: Rabbit
Target Name: ZNF238
Sample Tissue: Human Adult Placenta
Antibody Dilution: 1.0µg/ml



Host: Rabbit
Target Name: ZNF238
Sample Tissue: Human Fetal Stomach
Antibody Dilution: 1.0µg/ml

ZNF238 antibody - N-terminal region - References

Gregory,S.G., (2006) Nature 441 (7091), 315-321 Reconstitution and Storage:For short term use, store at 2-8C up to 1 week. For long term storage, store at -20C in small aliquots to prevent freeze-thaw cycles.