

**RAXL1 antibody - N-terminal region**  
**Rabbit Polyclonal Antibody**  
**Catalog # AI10931**

**Specification**

---

**RAXL1 antibody - N-terminal region - Product Information**

Application	WB
Primary Accession	<a href="#">O96IS3</a>
Other Accession	<a href="#">NM_032753</a> , <a href="#">NP_116142</a>
Reactivity	Human, Pig, Bovine, Dog
Predicted	Human, Bovine, Dog
Host	Rabbit
Clonality	Polyclonal
Calculated MW	20kDa KDa

**RAXL1 antibody - N-terminal region - Additional Information**

**Gene ID** 84839

**Alias Symbol** QRX, ARMD6, RAXL1, CORD11  
**Other Names**

Retina and anterior neural fold homeobox protein 2, Q50-type retinal homeobox protein, Retina and anterior neural fold homeobox-like protein 1, RAX2, QRX, RAXL1

**Format**

Liquid. Purified antibody supplied in 1x PBS buffer with 0.09% (w/v) sodium azide and 2% sucrose.

**Reconstitution & Storage**

Add 100 ul of distilled water. Final anti-RAXL1 antibody concentration is 1 mg/ml in PBS buffer with 2% sucrose. For longer periods of storage, store at 20°C. Avoid repeat freeze-thaw cycles.

**Precautions**

RAXL1 antibody - N-terminal region is for research use only and not for use in diagnostic or therapeutic procedures.

**RAXL1 antibody - N-terminal region - Protein Information**

**Name** RAX2

**Synonyms** QRX, RAXL1

**Function**

May be involved in modulating the expression of photoreceptor specific genes. Binds to the Ret-1 and Bat-1 element within the rhodopsin promoter.

**Cellular Location**

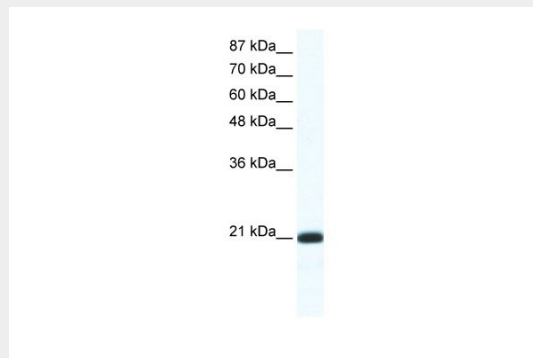
Nucleus {ECO:0000255|PROSITE-ProRule:PRU00108}.

## RAXL1 antibody - N-terminal region - Protocols

Provided below are standard protocols that you may find useful for product applications.

- [Western Blot](#)
- [Blocking Peptides](#)
- [Dot Blot](#)
- [Immunohistochemistry](#)
- [Immunofluorescence](#)
- [Immunoprecipitation](#)
- [Flow Cytometry](#)
- [Cell Culture](#)

## RAXL1 antibody - N-terminal region - Images



WB Suggested Anti-RAXL1 Antibody Titration: 1.25 $\mu$ g/ml  
ELISA Titer: 1:312500  
Positive Control: Jurkat cell lysate

## RAXL1 antibody - N-terminal region - References

Strausberg, R.L., et al., (2002) Proc. Natl. Acad. Sci. U.S.A. 99 (26), 16899-16903  
Reconstitution and Storage: For short term use, store at 2-8C up to 1 week. For long term storage, store at -20C in small aliquots to prevent freeze-thaw cycles.