

**PRDM15 antibody - C-terminal region**  
**Rabbit Polyclonal Antibody**  
**Catalog # AI10940****Specification**

---

**PRDM15 antibody - C-terminal region - Product Information**

Application	WB
Primary Accession	<a href="#">P57071</a>
Other Accession	<a href="#">NM_144771</a> , <a href="#">NP_658984</a>
Reactivity	Human, Mouse, Rat, Pig, Bovine, Dog
Predicted	Human, Mouse, Rat, Pig, Chicken, Bovine, Dog
Host	Rabbit
Clonality	Polyclonal
Calculated MW	39kDa KDa

**PRDM15 antibody - C-terminal region - Additional Information****Gene ID** 63977**Alias Symbol** C21orf83, PFM15, ZNF298**Other Names**

PR domain zinc finger protein 15, 2.1.1.-, PR domain-containing protein 15, Zinc finger protein 298, PRDM15, C21orf83, ZNF298

**Format**

Liquid. Purified antibody supplied in 1x PBS buffer with 0.09% (w/v) sodium azide and 2% sucrose.

**Reconstitution & Storage**

Add 50 ul of distilled water. Final anti-PRDM15 antibody concentration is 1 mg/ml in PBS buffer with 2% sucrose. For longer periods of storage, store at 20°C. Avoid repeat freeze-thaw cycles.

**Precautions**

PRDM15 antibody - C-terminal region is for research use only and not for use in diagnostic or therapeutic procedures.

**PRDM15 antibody - C-terminal region - Protein Information****Name** PRDM15 ([HGNC:13999](#))**Function**

Sequence-specific DNA-binding transcriptional regulator. Plays a role as a molecular node in a transcriptional network regulating embryonic development and cell fate decision. Stimulates the expression of upstream key transcriptional activators and repressors of the Wnt/beta-catenin and MAPK/ERK pathways, respectively, that are essential for naive pluripotency and self-renewal maintenance of embryonic stem cells (ESCs). Specifically promotes SPRY1 and RSP01 transcription activation through recognition and direct binding of a specific DNA sequence in their promoter regions. Involved in early embryo development (By similarity). Also plays a role in induced

pluripotent stem cells (iPSCs) reprogramming (PubMed:<a href="http://www.uniprot.org/citations/28740264" target="\_blank">28740264</a>).

**Cellular Location**

Nucleus.

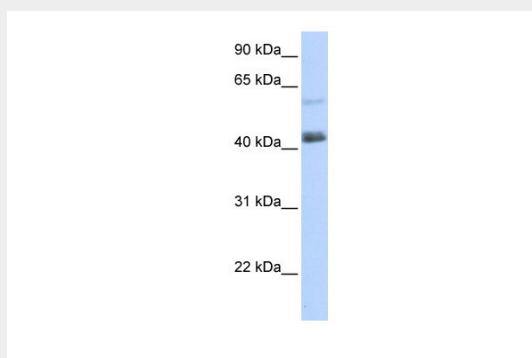
**Tissue Location**

Detected in all tissues examined.

**PRDM15 antibody - C-terminal region - Protocols**

Provided below are standard protocols that you may find useful for product applications.

- [Western Blot](#)
- [Blocking Peptides](#)
- [Dot Blot](#)
- [Immunohistochemistry](#)
- [Immunofluorescence](#)
- [Immunoprecipitation](#)
- [Flow Cytometry](#)
- [Cell Culture](#)

**PRDM15 antibody - C-terminal region - Images**

WB Suggested Anti-PRDM15 Antibody Titration: 0.2-1 µg/ml

ELISA Titer: 1:62500

Positive Control: 293T cell lysate