

ZNF573 Antibody - middle region
Rabbit Polyclonal Antibody
Catalog # AI10948

Specification

ZNF573 Antibody - middle region - Product Information

Application	WB
Primary Accession	Q86YE8-2
Reactivity	Human
Predicted	Human
Host	Rabbit
Clonality	Polyclonal
Calculated MW	63kDa KDa

ZNF573 Antibody - middle region - Additional Information

Format

Liquid. Purified antibody supplied in 1x PBS buffer with 0.09% (w/v) sodium azide and 2% sucrose.

Reconstitution & Storage

Add 50 ul of distilled water. Final anti-ZNF573 antibody concentration is 1 mg/ml in PBS buffer with 2% sucrose. For longer periods of storage, store at 20°C. Avoid repeat freeze-thaw cycles.

Precautions

ZNF573 Antibody - middle region is for research use only and not for use in diagnostic or therapeutic procedures.

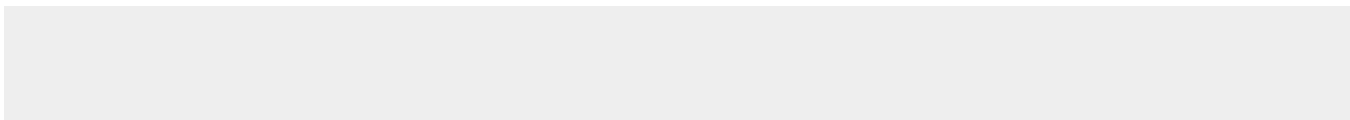
ZNF573 Antibody - middle region - Protein Information

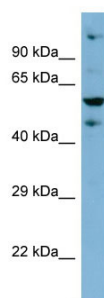
ZNF573 Antibody - middle region - Protocols

Provided below are standard protocols that you may find useful for product applications.

- [Western Blot](#)
- [Blocking Peptides](#)
- [Dot Blot](#)
- [Immunohistochemistry](#)
- [Immunofluorescence](#)
- [Immunoprecipitation](#)
- [Flow Cytometry](#)
- [Cell Culture](#)

ZNF573 Antibody - middle region - Images





Host: Rabbit

Target Name: ZNF573

Sample Tissue: HT1080 Whole cell lysate

S

Antibody Dilution: 1.0µg/ml ZNF573 is supported by BioGPS gene expression data to be expressed in HT1080