

ANXA8L2 antibody - N-terminal region
Rabbit Polyclonal Antibody
Catalog # AI10998

Specification

ANXA8L2 antibody - N-terminal region - Product Information

Application	WB
Primary Accession	Q5VT79
Other Accession	NM_001630 , NP_001621
Reactivity	Human, Mouse, Rat, Rabbit, Pig, Horse, Bovine, Dog
Predicted Host	Human
Clonality	Rabbit
Calculated MW	Polyclonal 37kDa KDa

ANXA8L2 antibody - N-terminal region - Additional Information

Gene ID 728113

Alias Symbol ANXA8, FLJ32754, bA145E20.2

Other Names

Annexin A8-like protein 2, ANXA8L2 {ECO:0000312|EMBL:CAH70574.1}

Format

Liquid. Purified antibody supplied in 1x PBS buffer with 0.09% (w/v) sodium azide and 2% sucrose.

Reconstitution & Storage

Add 50 ul of distilled water. Final anti-ANXA8L2 antibody concentration is 1 mg/ml in PBS buffer with 2% sucrose. For longer periods of storage, store at 20°C. Avoid repeat freeze-thaw cycles.

Precautions

ANXA8L2 antibody - N-terminal region is for research use only and not for use in diagnostic or therapeutic procedures.

ANXA8L2 antibody - N-terminal region - Protein Information

Name ANXA8L1 ([HGNC:23334](#))

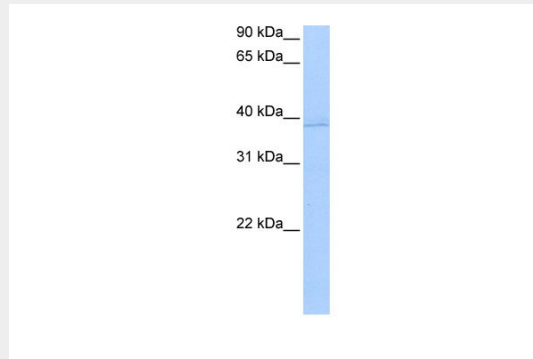
ANXA8L2 antibody - N-terminal region - Protocols

Provided below are standard protocols that you may find useful for product applications.

- [Western Blot](#)
- [Blocking Peptides](#)
- [Dot Blot](#)

- [Immunohistochemistry](#)
- [Immunofluorescence](#)
- [Immunoprecipitation](#)
- [Flow Cytometry](#)
- [Cell Culture](#)

ANXA8L2 antibody - N-terminal region - Images



WB Suggested Anti-ANXA8L2 Antibody Titration: 0.2-1 μ g/ml
ELISA Titer: 1:312500
Positive Control: MCF7 cell lysate

ANXA8L2 antibody - N-terminal region - References

Karanjawala,Z.E., (2008) Am. J. Surg. Pathol. 32 (2), 188-196 Reconstitution and Storage:For short term use, store at 2-8C up to 1 week. For long term storage, store at -20C in small aliquots to prevent freeze-thaw cycles.