

MCM8 antibody - N-terminal region
Rabbit Polyclonal Antibody
Catalog # AI11020**Specification**

MCM8 antibody - N-terminal region - Product Information

Application	WB
Primary Accession	O9UJA3
Other Accession	NM_032485 , NP_115874
Reactivity	Human, Mouse, Rat, Rabbit, Zebrafish, Horse, Bovine, Dog
Predicted	Human, Mouse, Rat, Rabbit, Pig, Chicken, Horse, Bovine, Dog
Host	Rabbit
Clonality	Polyclonal
Calculated MW	94kDa KDa

MCM8 antibody - N-terminal region - Additional Information**Gene ID** 84515**Alias Symbol** C20orf154, MGC119522, MGC119523, MGC12866, MGC4816, REC, dJ967N21.5**Other Names**

DNA helicase MCM8, 3.6.4.12, Minichromosome maintenance 8, MCM8, C20orf154

Format

Liquid. Purified antibody supplied in 1x PBS buffer with 0.09% (w/v) sodium azide and 2% sucrose.

Reconstitution & Storage

Add 50 ul of distilled water. Final anti-MCM8 antibody concentration is 1 mg/ml in PBS buffer with 2% sucrose. For longer periods of storage, store at 20°C. Avoid repeat freeze-thaw cycles.

Precautions

MCM8 antibody - N-terminal region is for research use only and not for use in diagnostic or therapeutic procedures.

MCM8 antibody - N-terminal region - Protein Information**Name** MCM8**Synonyms** C20orf154**Function**

Component of the MCM8-MCM9 complex, a complex involved in the repair of double-stranded DNA breaks (DBSs) and DNA interstrand cross- links (ICLs) by homologous recombination (HR) (PubMed:23401855). Required for DNA resection by the MRE11-RAD50-NBN/NBS1 (MRN) complex by recruiting the MRN

complex to the repair site and by promoting the complex nuclease activity (PubMed:26215093). Probably by regulating the localization of the MNR complex, indirectly regulates the recruitment of downstream effector RAD51 to DNA damage sites including DBSs and ICLs (PubMed:23401855). The MCM8-MCM9 complex is dispensable for DNA replication and S phase progression (PubMed:23401855). However, may play a non-essential for DNA replication: may be involved in the activation of the prereplicative complex (pre-RC) during G(1) phase by recruiting CDC6 to the origin recognition complex (ORC) (PubMed:15684404). Probably by regulating HR, plays a key role during gametogenesis (By similarity). Stabilizes MCM9 protein (PubMed:23401855, PubMed:26215093).

Cellular Location

Nucleus. Chromosome. Note=Localizes to nuclear foci (PubMed:26215093). Localizes to double-stranded DNA breaks (PubMed:23401855). Binds chromatin throughout the cell cycle (PubMed:15684404).

Tissue Location

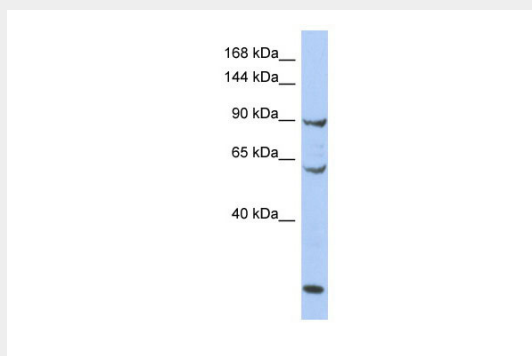
Highest levels in placenta, lung and pancreas. Low levels in skeletal muscle and kidney. Expressed in various tumors with highest levels in colon and lung cancers

MCM8 antibody - N-terminal region - Protocols

Provided below are standard protocols that you may find useful for product applications.

- [Western Blot](#)
- [Blocking Peptides](#)
- [Dot Blot](#)
- [Immunohistochemistry](#)
- [Immunofluorescence](#)
- [Immunoprecipitation](#)
- [Flow Cytometry](#)
- [Cell Culture](#)

MCM8 antibody - N-terminal region - Images



WB Suggested Anti-MCM8 Antibody Titration: 0.2-1 µg/ml

ELISA Titer: 1:1562500

Positive Control: OVCAR-3 cell lysate

