

Acid antibody - C-terminal region
Rabbit Polyclonal Antibody
Catalog # AI11035**Specification**

Acid antibody - C-terminal region - Product Information

Application	WB
Primary Accession	Q5EE38
Other Accession	NM_001012638 , NP_001012656
Reactivity	Human, Mouse, Rat, Horse, Bovine, Dog
Predicted	Human, Mouse, Rat, Bovine
Host	Rabbit
Clonality	Polyclonal
Calculated MW	45 KDa

Acid antibody - C-terminal region - Additional Information**Gene ID** 497652**Other Names**

Adrenocortical dysplasia protein, Acid

Format

Liquid. Purified antibody supplied in 1x PBS buffer with 0.09% (w/v) sodium azide and 2% sucrose.

Reconstitution & Storage

Add 50 ul of distilled water. Final anti-Acid antibody concentration is 1 mg/ml in PBS buffer with 2% sucrose. For longer periods of storage, store at 20°C. Avoid repeat freeze-thaw cycles.

Precautions

Acid antibody - C-terminal region is for research use only and not for use in diagnostic or therapeutic procedures.

Acid antibody - C-terminal region - Protein Information**Name** Acid {ECO:0000312|MGI:MGI:87873}**Function**

Component of the shelterin complex (telosome) that is involved in the regulation of telomere length and protection. Shelterin associates with arrays of double-stranded TTAGGG repeats added by telomerase and protects chromosome ends. Without its protective activity, telomeres are no longer hidden from the DNA damage surveillance and chromosome ends are inappropriately processed by DNA repair pathways. Promotes binding of POT1 to single-stranded telomeric DNA. Modulates the inhibitory effects of POT1 on telomere elongation. The ACD-POT1 heterodimer enhances telomere elongation by recruiting telomerase to telomeres and increasing its processivity (By similarity). May play a role in organogenesis (PubMed:15537664).

Cellular Location

Nucleus {ECO:0000250|UniProtKB:Q96AP0}. Chromosome, telomere
{ECO:0000250|UniProtKB:Q96AP0}

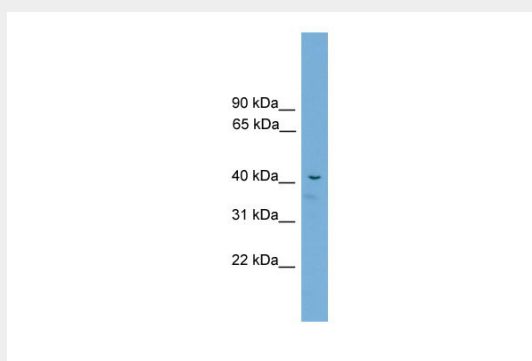
Tissue Location

Ubiquitous..

Acid antibody - C-terminal region - Protocols

Provided below are standard protocols that you may find useful for product applications.

- [Western Blot](#)
- [Blocking Peptides](#)
- [Dot Blot](#)
- [Immunohistochemistry](#)
- [Immunofluorescence](#)
- [Immunoprecipitation](#)
- [Flow Cytometry](#)
- [Cell Culture](#)

Acid antibody - C-terminal region - Images

WB Suggested Anti-Acid Antibody Titration: 0.2-1 µg/ml
Positive Control: Mouse Muscle