

Bapx1 antibody - N-terminal region
Rabbit Polyclonal Antibody
Catalog # AI11039**Specification**

Bapx1 antibody - N-terminal region - Product Information

Application	WB
Primary Accession	P97503
Other Accession	NM_007524 , NP_031550
Reactivity	Human, Mouse, Rat, Rabbit, Zebrafish, Horse, Bovine, Dog
Predicted Host	Rat, Zebrafish, Pig, Bovine, Dog
Clonality	Rabbit
Calculated MW	Polyclonal 37kDa KDa

Bapx1 antibody - N-terminal region - Additional Information**Gene ID** 12020**Alias Symbol** NKX3.2, Nkx-3.2, Nkx3-2, Bapx1**Other Names**

Homeobox protein Nkx-3.2, Bagpipe homeobox protein homolog 1, Homeobox protein NK-3 homolog B, Nkx3-2, Bapx1, Nkx-3.2, Nkx3b

Format

Liquid. Purified antibody supplied in 1x PBS buffer with 0.09% (w/v) sodium azide and 2% sucrose.

Reconstitution & Storage

Add 50 ul of distilled water. Final anti-Bapx1 antibody concentration is 1 mg/ml in PBS buffer with 2% sucrose. For longer periods of storage, store at 20°C. Avoid repeat freeze-thaw cycles.

Precautions

Bapx1 antibody - N-terminal region is for research use only and not for use in diagnostic or therapeutic procedures.

Bapx1 antibody - N-terminal region - Protein Information**Name** Nkx3-2**Synonyms** Bapx1, Nkx-3.2, Nkx3b**Function**

Transcriptional repressor that acts as a negative regulator of chondrocyte maturation. PLays a role in distal stomach development; required for proper antral-pyloric morphogenesis and development of antral-type epithelium. In concert with GSC, defines the structural components of the middle ear; required for tympanic ring and gonium development and in the regulation of the width of the malleus.

Cellular Location

Nucleus.

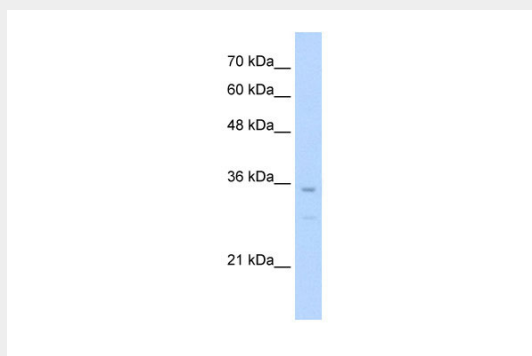
Tissue Location

Expressed widely in mesoderm at the gastroduodenal junction (at protein level). Expressed in visceral mesoderm and embryonic skeleton. Expression is restricted to immature proliferative chondrocytes during endochondral ossification

Bapx1 antibody - N-terminal region - Protocols

Provided below are standard protocols that you may find useful for product applications.

- [Western Blot](#)
- [Blocking Peptides](#)
- [Dot Blot](#)
- [Immunohistochemistry](#)
- [Immunofluorescence](#)
- [Immunoprecipitation](#)
- [Flow Cytometry](#)
- [Cell Culture](#)

Bapx1 antibody - N-terminal region - Images

WB Suggested Anti-Bapx1 Antibody Titration: 0.2-1 µg/ml

ELISA Titer: 1:62500

Positive Control: Jurkat cell lysate

Bapx1 antibody - N-terminal region - References

Provot, S., (2006) Development 133 (4), 651-662 Reconstitution and Storage: For short term use, store at 2-8°C up to 1 week. For long term storage, store at -20°C in small aliquots to prevent freeze-thaw cycles.