

Elf3 antibody - middle region
Rabbit Polyclonal Antibody
Catalog # AI11047**Specification**

Elf3 antibody - middle region - Product Information

Application	WB
Primary Accession	Q3UPW2
Other Accession	NM_007921 , NP_031947
Reactivity	Human, Mouse, Rat, Bovine, Dog
Predicted	Mouse, Rat, Bovine
Host	Rabbit
Clonality	Polyclonal
Calculated MW	42kDa KDa

Elf3 antibody - middle region - Additional Information**Gene ID** 13710**Alias Symbol** ESE-1, ESX, jen**Other Names**

ETS-related transcription factor Elf-3, E74-like factor 3, Epithelial-restricted with serine box, Epithelium-restricted Ets protein ESX, Epithelium-specific Ets transcription factor 1, ESE-1, Elf3 {ECO:0000312|MGI:MGI:1101781}, Ert, Esx, Jen

Format

Liquid. Purified antibody supplied in 1x PBS buffer with 0.09% (w/v) sodium azide and 2% sucrose.

Reconstitution & Storage

Add 50 ul of distilled water. Final anti-Elf3 antibody concentration is 1 mg/ml in PBS buffer with 2% sucrose. For longer periods of storage, store at 20°C. Avoid repeat freeze-thaw cycles.

Precautions

Elf3 antibody - middle region is for research use only and not for use in diagnostic or therapeutic procedures.

Elf3 antibody - middle region - Protein Information**Name** Elf3 {ECO:0000312|MGI:MGI:1101781}**Synonyms** Ert, Esx, Jen**Function**

Transcriptional activator that binds and transactivates ETS sequences containing the consensus nucleotide core sequence GGA[AT]. Acts synergistically with POU2F3 to transactivate the SPRR2A promoter and with RUNX1 to transactivate the ANGPT1 promoter (By similarity). Also transactivates collagenase, CCL20, CLND7, FLG, KRT8, NOS2, PTGS2, SPRR2B, TGFBR2 and TGM3 promoters. Represses KRT4 promoter activity (By similarity). Involved in mediating vascular

inflammation. May play an important role in epithelial cell differentiation and tumorigenesis. May be a critical downstream effector of the ERBB2 signaling pathway (By similarity). May be associated with mammary gland development and involution. Plays an important role in the regulation of transcription with TATA-less promoters in preimplantation embryos, which is essential in preimplantation development.

Cellular Location

Cytoplasm {ECO:0000250|UniProtKB:P78545}. Nucleus {ECO:0000255|PROSITE-ProRule:PRU00237, ECO:0000269|PubMed:16516205}

Tissue Location

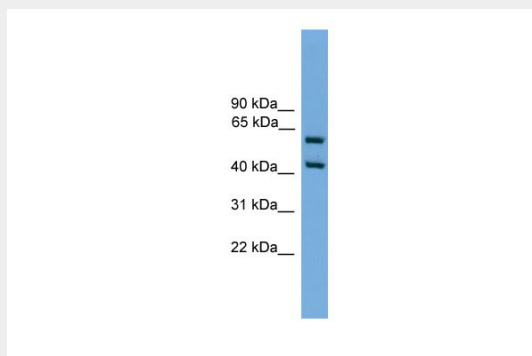
Expressed in small intestine, colon, lung, kidney and uterus. Also expressed in the corneal epithelium and conjunctiva of the developing and adult eye. Not detected in liver, spleen, thymus, brain, heart, skeletal muscle or ovary.

Elf3 antibody - middle region - Protocols

Provided below are standard protocols that you may find useful for product applications.

- [Western Blot](#)
- [Blocking Peptides](#)
- [Dot Blot](#)
- [Immunohistochemistry](#)
- [Immunofluorescence](#)
- [Immunoprecipitation](#)
- [Flow Cytometry](#)
- [Cell Culture](#)

Elf3 antibody - middle region - Images



WB Suggested Anti-Elf3 Antibody Titration: 0.2-1 µg/ml
Positive Control: SP2/0 cell lysate