

Men1 antibody - middle region
Rabbit Polyclonal Antibody
Catalog # AI11067**Specification**

Men1 antibody - middle region - Product Information

Application	WB
Primary Accession	O88559
Other Accession	NM_008583 , NP_032609
Reactivity	Human, Mouse, Rat, Pig, Horse, Bovine
Predicted	Human, Mouse, Rat, Pig
Host	Rabbit
Clonality	Polyclonal
Calculated MW	67kDa KDa

Men1 antibody - middle region - Additional Information**Gene ID** 17283

Alias Symbol	AW045611
Other Names	
Menin, Men1	

Format

Liquid. Purified antibody supplied in 1x PBS buffer with 0.09% (w/v) sodium azide and 2% sucrose.

Reconstitution & Storage

Add 50 ul of distilled water. Final anti-Men1 antibody concentration is 1 mg/ml in PBS buffer with 2% sucrose. For longer periods of storage, store at 20°C. Avoid repeat freeze-thaw cycles.

Precautions

Men1 antibody - middle region is for research use only and not for use in diagnostic or therapeutic procedures.

Men1 antibody - middle region - Protein Information**Name** Men1**Function**

Essential component of a MLL/SET1 histone methyltransferase (HMT) complex, a complex that specifically methylates 'Lys-4' of histone H3 (H3K4). Functions as a transcriptional regulator. Binds to the TERT promoter and represses telomerase expression. Plays a role in TGFB1-mediated inhibition of cell-proliferation, possibly regulating SMAD3 transcriptional activity. Represses JUND-mediated transcriptional activation on AP1 sites, as well as that mediated by NFKB subunit RELA. Positively regulates HOXC8 and HOXC6 gene expression (By similarity). May be involved in normal hematopoiesis through the activation of HOXA9 expression. May be involved in DNA repair.

Cellular Location

Nucleus. Note=May be perinuclear in testis.

Tissue Location

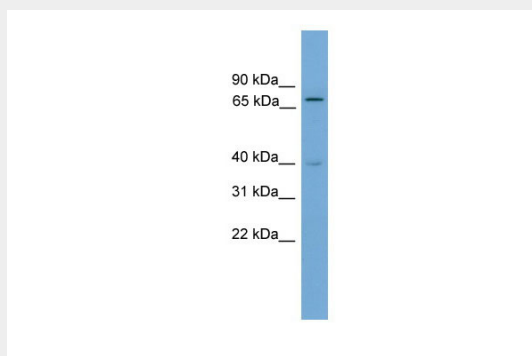
Widely expressed, with high levels in hippocampus, cerebral cortex, testis and thymus (at protein level). Also expressed at high levels in pancreatic islets, ovary and bone marrow. In the brain, highest expression in hippocampus pyramidal nerve cells (at protein level). In the testis, may be expressed in spermatogonia (at protein level). Low expression, if any, in skeletal muscle

Men1 antibody - middle region - Protocols

Provided below are standard protocols that you may find useful for product applications.

- [Western Blot](#)
- [Blocking Peptides](#)
- [Dot Blot](#)
- [Immunohistochemistry](#)
- [Immunofluorescence](#)
- [Immunoprecipitation](#)
- [Flow Cytometry](#)
- [Cell Culture](#)

Men1 antibody - middle region - Images



WB Suggested Anti-Men1 Antibody Titration: 0.2-1 μ g/ml
Positive Control: Mouse Muscle