

Nkx1-2 antibody - middle region
Rabbit Polyclonal Antibody
Catalog # AI11082**Specification**

Nkx1-2 antibody - middle region - Product Information

Application	WB
Primary Accession	P42580
Other Accession	NM_009123 , NP_033149
Reactivity	Mouse, Rat, Pig
Predicted	Rat
Host	Rabbit
Clonality	Polyclonal
Calculated MW	32kDa KDa

Nkx1-2 antibody - middle region - Additional Information**Gene ID** 20231**Alias Symbol** Nkx-1.1, Nkx-1.2, Sax1**Other Names**

NK1 transcription factor-related protein 2, Homeobox protein SAX-1, NKX-1.1, Nkx1-2, Nkx1.1, Sax1

Format

Liquid. Purified antibody supplied in 1x PBS buffer with 0.09% (w/v) sodium azide and 2% sucrose.

Reconstitution & Storage

Add 50 ul of distilled water. Final anti-Nkx1-2 antibody concentration is 1 mg/ml in PBS buffer with 2% sucrose. For longer periods of storage, store at 20°C. Avoid repeat freeze-thaw cycles.

Precautions

Nkx1-2 antibody - middle region is for research use only and not for use in diagnostic or therapeutic procedures.

Nkx1-2 antibody - middle region - Protein Information**Name** Nkx1-2**Synonyms** Nkx1.1, Sax1**Function**

May function in cell specification, particularly in the CNS.

Cellular Location

Nucleus.

Tissue Location

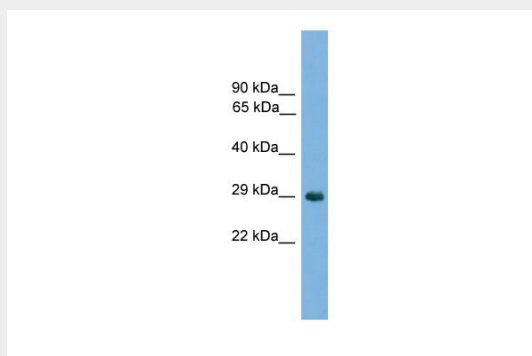
Expression detected in adult brain, testis and spleen. In the testis, expressed in the germ cells of the seminiferous epithelium, in elongating spermatids and in spermatozoa. Expressed throughout the brain with highest levels in regions of the cerebral cortex, hippocampus, diencephalon, pons, medulla and cerebellum. In the embryo, expressed in the developing posterior central nervous system. First seen in the ectoderm lateral to the primitive streak, later it encompasses the neural plate. Starting at day 9.5 pc, expressed in distinct areas of spinal cord, hindbrain, midbrain and forebrain

Nkx1-2 antibody - middle region - Protocols

Provided below are standard protocols that you may find useful for product applications.

- [Western Blot](#)
- [Blocking Peptides](#)
- [Dot Blot](#)
- [Immunohistochemistry](#)
- [Immunofluorescence](#)
- [Immunoprecipitation](#)
- [Flow Cytometry](#)
- [Cell Culture](#)

Nkx1-2 antibody - middle region - Images



WB Suggested Anti-Nkx1-2 Antibody Titration: 0.2-1 µg/ml

ELISA Titer: 1:1562500

Positive Control: Mouse Lung