

Hira antibody - middle region
Rabbit Polyclonal Antibody
Catalog # AI11112**Specification**

Hira antibody - middle region - Product Information

Application	WB
Primary Accession	Q61666
Other Accession	NM_010435 , NP_034565
Reactivity	Human, Mouse, Rat, Rabbit, Horse, Dog
Predicted	Human, Mouse, Rabbit, Pig, Dog
Host	Rabbit
Clonality	Polyclonal
Calculated MW	112 KDa

Hira antibody - middle region - Additional Information**Gene ID** 15260**Alias Symbol** AA138857, D16Ertd95e, N28177, Tuple1**Other Names**

Protein HIRA, TUP1-like enhancer of split protein 1, Hira, Tuple1

Format

Liquid. Purified antibody supplied in 1x PBS buffer with 0.09% (w/v) sodium azide and 2% sucrose.

Reconstitution & Storage

Add 50 ul of distilled water. Final anti-Hira antibody concentration is 1 mg/ml in PBS buffer with 2% sucrose. For longer periods of storage, store at 20°C. Avoid repeat freeze-thaw cycles.

Precautions

Hira antibody - middle region is for research use only and not for use in diagnostic or therapeutic procedures.

Hira antibody - middle region - Protein Information**Name** Hira**Synonyms** Tuple1**Function**

Required for the periodic repression of histone gene transcription during the cell cycle (By similarity). Cooperates with ASF1A to promote replication-independent chromatin assembly. Required for the formation of senescence-associated heterochromatin foci (SAHF) and efficient senescence-associated cell cycle exit.

Cellular Location

Nucleus. Nucleus, PML body. Note=Primarily, though not exclusively, localized to the nucleus (By

similarity). Localizes to PML bodies immediately prior to onset of senescence (By similarity). Localizes specifically to the male nucleus in fertilized eggs. This localization persists from the initiation of sperm nucleus decondensation to pronucleus formation {ECO:0000250, ECO:0000269|PubMed:15922569, ECO:0000269|PubMed:9731536}

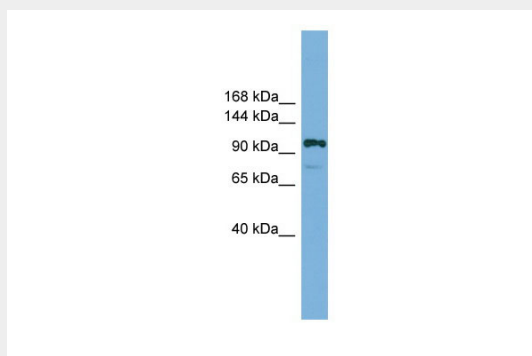
Tissue Location

Expressed in cerebrum, cerebellum, heart, kidney, liver, lung and spleen

Hira antibody - middle region - Protocols

Provided below are standard protocols that you may find useful for product applications.

- [Western Blot](#)
- [Blocking Peptides](#)
- [Dot Blot](#)
- [Immunohistochemistry](#)
- [Immunofluorescence](#)
- [Immunoprecipitation](#)
- [Flow Cytometry](#)
- [Cell Culture](#)

Hira antibody - middle region - Images

WB Suggested Anti-Hira Antibody Titration: 0.2-1 µg/ml
Positive Control: Mouse Brain