

SOX7 antibody - N-terminal region
Rabbit Polyclonal Antibody
Catalog # AI11135**Specification**

SOX7 antibody - N-terminal region - Product Information

Application	WB
Primary Accession	P40646
Other Accession	NM_011446 , NP_035576
Reactivity	Human, Mouse, Rat, Pig, Bovine
Predicted	Human, Mouse, Rat, Bovine
Host	Rabbit
Clonality	Polyclonal
Calculated MW	42kDa KDa

SOX7 antibody - N-terminal region - Additional Information**Gene ID** 20680**Other Names**

Transcription factor SOX-7, mSOX7, Sox7, Sox-7

Format

Liquid. Purified antibody supplied in 1x PBS buffer with 0.09% (w/v) sodium azide and 2% sucrose.

Reconstitution & Storage

Add 100 ul of distilled water. Final anti-SOX7 antibody concentration is 1 mg/ml in PBS buffer with 2% sucrose. For longer periods of storage, store at 20°C. Avoid repeat freeze-thaw cycles.

Precautions

SOX7 antibody - N-terminal region is for research use only and not for use in diagnostic or therapeutic procedures.

SOX7 antibody - N-terminal region - Protein Information**Name** Sox7**Synonyms** Sox-7**Function**

Binds to and activates the CDH5 promoter, hence plays a role in the transcriptional regulation of genes expressed in the hemogenic endothelium and blocks further differentiation into blood precursors. May be required for the survival of both hematopoietic and endothelial precursors during specification. May play a role in skeletal myogenesis and up-regulate the expression of muscle markers, such as PAX3/PAX7 and Meox1. Competes with GATA4 for binding and activation of the FGF3 promoter. Represses Wnt/beta-catenin-stimulated transcription. Probably acts by targeting CTNNB1 to proteasomal degradation. Binds the DNA sequence 5'-AACAAAT-3'.

Cellular Location

Nucleus {ECO:0000255|PROSITE-ProRule:PRU00267, ECO:0000269|PubMed:11691915}.
Cytoplasm

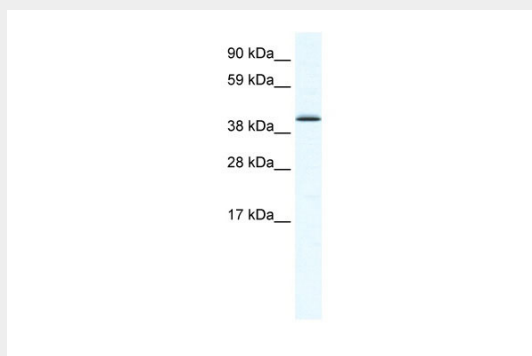
Tissue Location

Predominantly expressed in ovary, lung and heart. In the ovary, restricted to oocytes (at protein level). Present both in mesenchymal and epithelial cells in some adult tissues, including ear

SOX7 antibody - N-terminal region - Protocols

Provided below are standard protocols that you may find useful for product applications.

- [Western Blot](#)
- [Blocking Peptides](#)
- [Dot Blot](#)
- [Immunohistochemistry](#)
- [Immunofluorescence](#)
- [Immunoprecipitation](#)
- [Flow Cytometry](#)
- [Cell Culture](#)

SOX7 antibody - N-terminal region - Images

WB Suggested Anti-SOX7 Antibody Titration: 1.25µg/ml

ELISA Titer: 1:12500

Positive Control: SP2/0 cell lysate

SOX7 antibody - N-terminal region - References

Wilson, M.E., et al., (2005) Diabetes 54 (12), 3402-3409
Reconstitution and Storage: For short term use, store at 2-8°C up to 1 week. For long term storage, store at -20°C in small aliquots to prevent freeze-thaw cycles.