

**Nr2c1 antibody - N-terminal region**  
**Rabbit Polyclonal Antibody**  
**Catalog # AI11142****Specification**

---

**Nr2c1 antibody - N-terminal region - Product Information**

Application	WB
Primary Accession	<a href="#">Q8VIJ4</a>
Other Accession	<a href="#">NM_011629</a> , <a href="#">NP_035759</a>
Reactivity	Human, Mouse, Rat, Horse, Yeast, Bovine, Dog
Predicted	Human, Mouse, Horse, Dog
Host	Rabbit
Clonality	Polyclonal
Calculated MW	65kDa KDa

**Nr2c1 antibody - N-terminal region - Additional Information****Gene ID** 252924**Alias Symbol** 4831444H07Rik, 80.3, Eenr, TR2, Tr2-11**Other Names**

Nuclear receptor subfamily 2 group C member 1, Orphan nuclear receptor TR2, Testicular receptor 2, Nr2c1, Tr2

**Format**

Liquid. Purified antibody supplied in 1x PBS buffer with 0.09% (w/v) sodium azide and 2% sucrose.

**Reconstitution & Storage**

Add 50 ul of distilled water. Final anti-Nr2c1 antibody concentration is 1 mg/ml in PBS buffer with 2% sucrose. For longer periods of storage, store at 20°C. Avoid repeat freeze-thaw cycles.

**Precautions**

Nr2c1 antibody - N-terminal region is for research use only and not for use in diagnostic or therapeutic procedures.

**Nr2c1 antibody - N-terminal region - Protein Information****Name** Nr2c1**Synonyms** Tr2**Function**

Orphan nuclear receptor. Binds the IR7 element in the promoter of its own gene in an autoregulatory negative feedback mechanism. Primarily repressor of a broad range of genes including ESR1 and RARB. Together with NR2C2, forms the core of the DRED (direct repeat erythroid-definitive) complex that represses embryonic and fetal globin transcription. Binds to hormone response elements (HREs) consisting of two 5'-AGGTCA-3' half site direct repeat

consensus sequences. Also activator of OCT4 gene expression. Plays a fundamental role in early embryogenesis and regulates embryonic stem cell proliferation and differentiation. Mediator of retinoic acid-regulated preadipocyte proliferation (By similarity).

#### Cellular Location

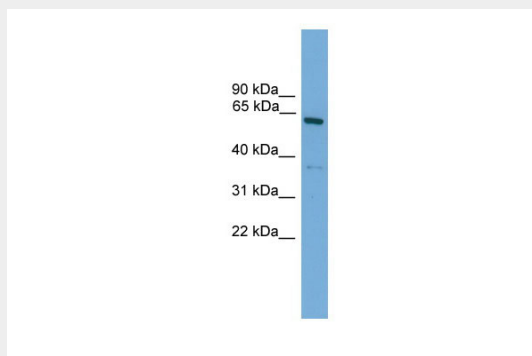
Nucleus {ECO:0000255|PROSITE-ProRule:PRU00407}. Nucleus, PML body. Note=Recruited by HDAC3, after all- trans retinoic acid stimulated MAPK1-mediated Thr-210 phosphorylation, to PML bodies for subsequent sumoylation.

#### Nr2c1 antibody - N-terminal region - Protocols

Provided below are standard protocols that you may find useful for product applications.

- [Western Blot](#)
- [Blocking Peptides](#)
- [Dot Blot](#)
- [Immunohistochemistry](#)
- [Immunofluorescence](#)
- [Immunoprecipitation](#)
- [Flow Cytometry](#)
- [Cell Culture](#)

#### Nr2c1 antibody - N-terminal region - Images



WB Suggested Anti-Nr2c1 Antibody Titration: 0.2-1 µg/ml

ELISA Titer: 1:62500

Positive Control: Mouse Lung