

**PDLIM1 antibody - middle region**  
**Rabbit Polyclonal Antibody**  
**Catalog # AI11156****Specification**

---

**PDLIM1 antibody - middle region - Product Information**

Application	WB
Primary Accession	<a href="#">O70400</a>
Other Accession	<a href="#">NM_016861</a> , <a href="#">NP_058557</a>
Reactivity	Mouse, Rat
Predicted	Mouse
Host	Rabbit
Clonality	Polyclonal
Calculated MW	36kDa KDa

**PDLIM1 antibody - middle region - Additional Information****Gene ID** 54132**Alias Symbol** **Clim1, mClim1****Other Names**

PDZ and LIM domain protein 1, C-terminal LIM domain protein 1, Elfin, LIM domain protein CLP-36, Pdlim1, Clim1

**Format**

Liquid. Purified antibody supplied in 1x PBS buffer with 0.09% (w/v) sodium azide and 2% sucrose.

**Reconstitution & Storage**

Add 100 ul of distilled water. Final anti-PDLIM1 antibody concentration is 1 mg/ml in PBS buffer with 2% sucrose. For longer periods of storage, store at 20°C. Avoid repeat freeze-thaw cycles.

**Precautions**

PDLIM1 antibody - middle region is for research use only and not for use in diagnostic or therapeutic procedures.

**PDLIM1 antibody - middle region - Protein Information****Name** Pdlim1**Synonyms** Clim1**Function**

Cytoskeletal protein that may act as an adapter that brings other proteins (like kinases) to the cytoskeleton (By similarity). Involved in assembly, disassembly and directioning of stress fibers in fibroblasts. Required for the localization of ACTN1 and PALLD to stress fibers. Required for cell migration and in maintaining cell polarity of fibroblasts (By similarity).

**Cellular Location**

Cytoplasm, cytoskeleton. Cytoplasm, myofibril, sarcomere, Z line  
{ECO:0000250|UniProtKB:O00151}. Note=Associates with the actin stress fibers  
(PubMed:11596114)

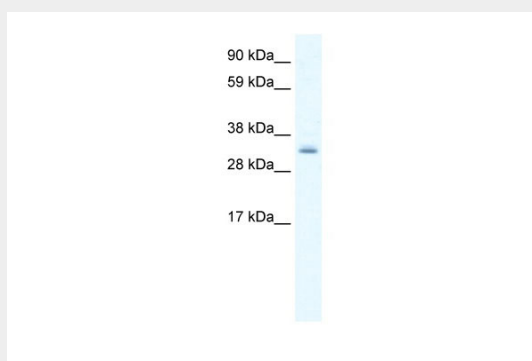
**Tissue Location**

Expressed in heart, lung, spleen, testis and skeletal muscle.

**PDLIM1 antibody - middle region - Protocols**

Provided below are standard protocols that you may find useful for product applications.

- [Western Blot](#)
- [Blocking Peptides](#)
- [Dot Blot](#)
- [Immunohistochemistry](#)
- [Immunofluorescence](#)
- [Immunoprecipitation](#)
- [Flow Cytometry](#)
- [Cell Culture](#)

**PDLIM1 antibody - middle region - Images**

WB Suggested Anti-PDLIM1 Antibody Titration: 0.625µg/ml  
ELISA Titer: 1:1562500  
Positive Control: NIH/3T3 cell lysate

**PDLIM1 antibody - middle region - References**

Remedios,R., et al., (2004) J. Neurosci. 24 (31), 6986-6990  
Reconstitution and Storage: For short term use, store at 2-8C up to 1 week. For long term storage, store at -20C in small aliquots to prevent freeze-thaw cycles.