

CITED4 antibody - N-terminal region
Rabbit Polyclonal Antibody
Catalog # AI11165**Specification**

CITED4 antibody - N-terminal region - Product Information

Application	WB
Primary Accession	O9WUL8
Other Accession	NM_019563 , NP_062509
Reactivity	Mouse, Rat
Predicted	Mouse
Host	Rabbit
Clonality	Polyclonal
Calculated MW	20kDa KDa

CITED4 antibody - N-terminal region - Additional Information**Gene ID** 56222**Alias Symbol** Mrg2, MRG-2**Other Names**Cbp/p300-interacting transactivator 4, MSG1-related protein 2, MRG-2, Cited4
{ECO:0000312|MGI:MGI:1861694}**Format**

Liquid. Purified antibody supplied in 1x PBS buffer with 0.09% (w/v) sodium azide and 2% sucrose.

Reconstitution & Storage

Add 100 ul of distilled water. Final anti-CITED4 antibody concentration is 1 mg/ml in PBS buffer with 2% sucrose. For longer periods of storage, store at 20°C. Avoid repeat freeze-thaw cycles.

Precautions

CITED4 antibody - N-terminal region is for research use only and not for use in diagnostic or therapeutic procedures.

CITED4 antibody - N-terminal region - Protein Information**Name** Cited4 {ECO:0000312|MGI:MGI:1861694}**Function**

Acts as a transcriptional coactivator for TFAP2/AP-2. Enhances estrogen-dependent transactivation mediated by estrogen receptors. May function as an inhibitor of transactivation by HIF1A by disrupting HIF1A interaction with CREBBP. May be involved in regulation of gene expression during development and differentiation of blood cells, endothelial cells and mammary epithelial cells.

Cellular Location

Nucleus. Cytoplasm {ECO:0000250|UniProtKB:Q96RK1}

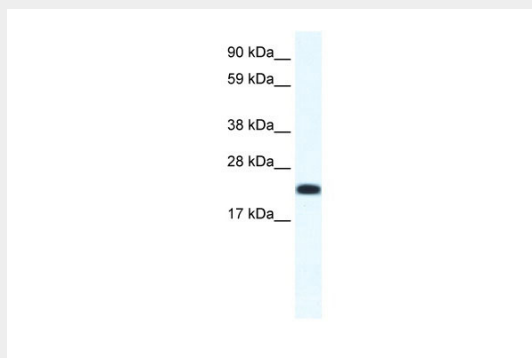
Tissue Location

Strongly expressed in heart, spleen and testis, and weakly in liver and kidney.

CITED4 antibody - N-terminal region - Protocols

Provided below are standard protocols that you may find useful for product applications.

- [Western Blot](#)
- [Blocking Peptides](#)
- [Dot Blot](#)
- [Immunohistochemistry](#)
- [Immunofluorescence](#)
- [Immunoprecipitation](#)
- [Flow Cytometry](#)
- [Cell Culture](#)

CITED4 antibody - N-terminal region - Images

WB Suggested Anti-CITED4 Antibody Titration: 1.25µg/ml

ELISA Titer: 1:1562500

Positive Control: SP2/0 cell lysate

CITED4 antibody - N-terminal region - References

Blackshaw, S., et al., (2004) PLoS Biol. 2 (9), E247
Reconstitution and Storage: For short term use, store at 2-8°C up to 1 week. For long term storage, store at -20°C in small aliquots to prevent freeze-thaw cycles.