

**TAF1B antibody - C-terminal region**  
**Rabbit Polyclonal Antibody**  
**Catalog # AI11175****Specification**

---

**TAF1B antibody - C-terminal region - Product Information**

Application	WB
Primary Accession	<a href="#">P97358</a>
Other Accession	<a href="#">NM_020614</a> , <a href="#">NP_065639</a>
Reactivity	Mouse, Rat
Predicted	Mouse, Rat
Host	Rabbit
Clonality	Polyclonal
Calculated MW	64kDa KDa

**TAF1B antibody - C-terminal region - Additional Information****Gene ID** 21340**Alias Symbol** TAFI68, Tafi86, 4930408G01Rik, A230108M10Rik**Other Names**

TATA box-binding protein-associated factor RNA polymerase I subunit B, RNA polymerase I-specific TBP-associated factor 68 kDa, TAFI68, TATA box-binding protein-associated factor 1B, TBP-associated factor 1B, Transcription initiation factor SL1/TIF-IB subunit B, Taf1b

**Format**

Liquid. Purified antibody supplied in 1x PBS buffer with 0.09% (w/v) sodium azide and 2% sucrose.

**Reconstitution & Storage**

Add 100 ul of distilled water. Final anti-TAF1B antibody concentration is 1 mg/ml in PBS buffer with 2% sucrose. For longer periods of storage, store at 20°C. Avoid repeat freeze-thaw cycles.

**Precautions**

TAF1B antibody - C-terminal region is for research use only and not for use in diagnostic or therapeutic procedures.

**TAF1B antibody - C-terminal region - Protein Information****Name** Taf1b**Function**

Component of RNA polymerase I core factor complex that acts as a GTF2B/TFIIB-like factor and plays a key role in multiple steps during transcription initiation such as pre-initiation complex (PIC) assembly and postpolymerase recruitment events in polymerase I (Pol I) transcription. Binds rDNA promoters and plays a role in Pol I recruitment as a component of the SL1/TIF-IB complex and, possibly, directly through its interaction with RRN3.

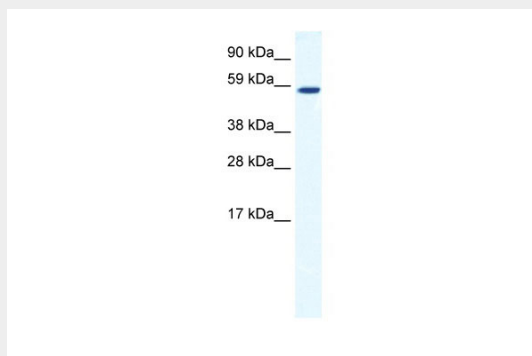
**Cellular Location**

Nucleus, nucleolus {ECO:0000250|UniProtKB:Q53T94}

**TAF1B antibody - C-terminal region - Protocols**

Provided below are standard protocols that you may find useful for product applications.

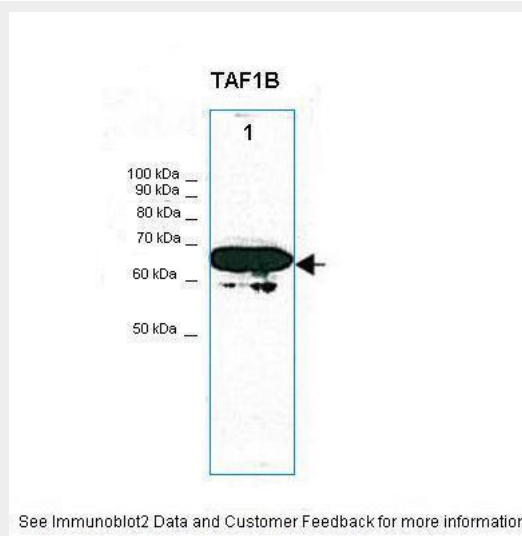
- [Western Blot](#)
- [Blocking Peptides](#)
- [Dot Blot](#)
- [Immunohistochemistry](#)
- [Immunofluorescence](#)
- [Immunoprecipitation](#)
- [Flow Cytometry](#)
- [Cell Culture](#)

**TAF1B antibody - C-terminal region - Images**

WB Suggested Anti-TAF1B Antibody Titration: 1.25µg/ml

ELISA Titer: 1:312500

Positive Control: SP2/0 cell lysate



Lanes: 30ug NIH3T3 cell lysate

Primary Antibody Dilution: 1:1000  
Secondary Antibody: Anti-rabbit HRP  
Secondary Antibody Dilution: 1:5000  
Gene Name: TAF1B  
Submitted by: Thomas Moss

**TAF1B antibody - C-terminal region - References**

Wang,Z., et al., (2004) Gene 325, 25-34  
Reconstitution and Storage: For short term use, store at 2-8C up to 1 week. For long term storage, store at -20C in small aliquots to prevent freeze-thaw cycles.