

Ilf2 Antibody - N-terminal region
Rabbit Polyclonal Antibody
Catalog # AI11193**Specification**

Ilf2 Antibody - N-terminal region - Product Information

Application	WB
Primary Accession	O9CXY6
Other Accession	NM_026374 , NP_080650
Reactivity	Human, Mouse, Rat, Rabbit, Zebrafish, Horse, Bovine, Dog
Predicted	Human, Mouse, Rat, Rabbit, Zebrafish, Pig, Bovine
Host	Rabbit
Clonality	Polyclonal
Calculated MW	42kDa KDa

Ilf2 Antibody - N-terminal region - Additional Information**Gene ID** 67781**Alias Symbol** 6230405A16Rik, TEG-267, Tex261, Tex267**Other Names**

Interleukin enhancer-binding factor 2, Nuclear factor of activated T-cells 45 kDa, Ilf2, Nf45

Format

Liquid. Purified antibody supplied in 1x PBS buffer with 0.09% (w/v) sodium azide and 2% sucrose.

Reconstitution & Storage

Add 50 ul of distilled water. Final anti-Ilf2 antibody concentration is 1 mg/ml in PBS buffer with 2% sucrose. For longer periods of storage, store at 20°C. Avoid repeat freeze-thaw cycles.

Precautions

Ilf2 Antibody - N-terminal region is for research use only and not for use in diagnostic or therapeutic procedures.

Ilf2 Antibody - N-terminal region - Protein Information**Name** Ilf2**Synonyms** Nf45**Function**Chromatin-interacting protein that forms a stable heterodimer with interleukin enhancer-binding factor 3/ILF3 and plays a role in several biological processes including transcription, innate immunity or cell growth (PubMed: <http://www.uniprot.org/citations/10574923> target="_blank">10574923). Essential for the efficient reshuttling of ILF3 (isoform 1 and isoform 2) into the nucleus. Together with ILF3, forms an RNA-binding complex that is required for

mitotic progression and cytokinesis by regulating the expression of a cluster of mitotic genes. Mechanistically, competes with STAU1/STAU2- mediated mRNA decay. Also plays a role in the inhibition of various viruses including Japanese encephalitis virus or enterovirus 71 (By similarity) (PubMed:10574923).

Cellular Location

Nucleus, nucleolus {ECO:0000250|UniProtKB:Q12905}. Cytoplasm {ECO:0000250|UniProtKB:Q12905}. Nucleus {ECO:0000250|UniProtKB:Q12905} Note=Localized in cytoplasmic mRNP granules containing untranslated mRNAs. {ECO:0000250|UniProtKB:Q12905}

Tissue Location

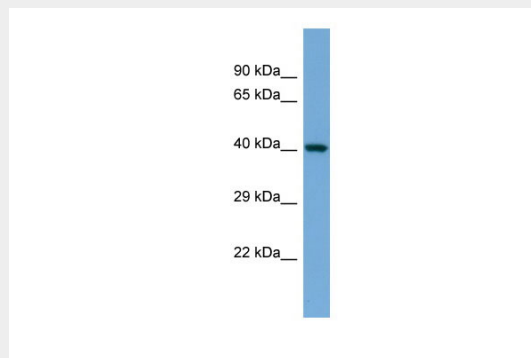
Expressed in brain, kidney and ovary; highly expressed in testis, particularly within pachytene cells

Ilf2 Antibody - N-terminal region - Protocols

Provided below are standard protocols that you may find useful for product applications.

- [Western Blot](#)
- [Blocking Peptides](#)
- [Dot Blot](#)
- [Immunohistochemistry](#)
- [Immunofluorescence](#)
- [Immunoprecipitation](#)
- [Flow Cytometry](#)
- [Cell Culture](#)

Ilf2 Antibody - N-terminal region - Images



Host: Rabbit
Target Name: Ilf2
Sample Tissue: Mouse Heart lysates
Antibody Dilution: 1.0µg/ml