

Jundm2 antibody - N-terminal region
Rabbit Polyclonal Antibody
Catalog # AI11210**Specification**

Jundm2 antibody - N-terminal region - Product Information

| | |
|-------------------|---|
| Application | WB |
| Primary Accession | P97875 |
| Other Accession | NM_030887 , NP_112149 |
| Reactivity | Human, Mouse, Rat, Rabbit, Horse, Bovine, Dog |
| Predicted Host | Human, Mouse, Rat, Rabbit, Pig, Horse |
| Clonality | Rabbit |
| Calculated MW | Polyclonal 19kDa KDa |

Jundm2 antibody - N-terminal region - Additional Information**Gene ID** 81703

| | |
|--|----------------------------------|
| Alias Symbol | Jdp2, Jundp2, TIF, Jundm2 |
| Other Names | |
| Jun dimerization protein 2, Jdp2, Jundm2 | |

Format

Liquid. Purified antibody supplied in 1x PBS buffer with 0.09% (w/v) sodium azide and 2% sucrose.

Reconstitution & Storage

Add 50 ul of distilled water. Final anti-Jundm2 antibody concentration is 1 mg/ml in PBS buffer with 2% sucrose. For longer periods of storage, store at 20°C. Avoid repeat freeze-thaw cycles.

Precautions

Jundm2 antibody - N-terminal region is for research use only and not for use in diagnostic or therapeutic procedures.

Jundm2 antibody - N-terminal region - Protein Information**Name** Jdp2**Synonyms** Jundm2**Function**

Component of the AP-1 transcription factor that represses transactivation mediated by the Jun family of proteins. Involved in a variety of transcriptional responses associated with AP-1, such as UV- induced apoptosis, cell differentiation, tumorigenesis and antitumogeneris. Can also function as a repressor by recruiting histone deacetylase 3/HDAC3 to the promoter region of JUN. May control transcription via direct regulation of the modification of histones and the assembly of chromatin (By similarity).

Cellular Location

Nucleus.

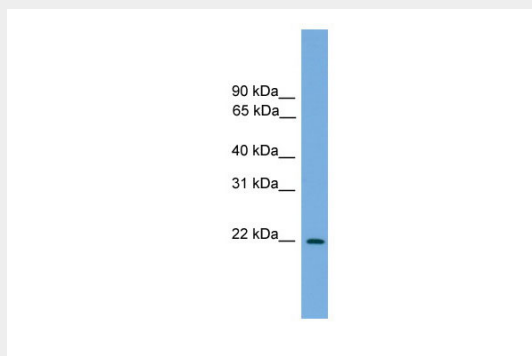
Tissue Location

Ubiquitously expressed in all adult tissues tested as well in embryos.

Jundm2 antibody - N-terminal region - Protocols

Provided below are standard protocols that you may find useful for product applications.

- [Western Blot](#)
- [Blocking Peptides](#)
- [Dot Blot](#)
- [Immunohistochemistry](#)
- [Immunofluorescence](#)
- [Immunoprecipitation](#)
- [Flow Cytometry](#)
- [Cell Culture](#)

Jundm2 antibody - N-terminal region - Images

WB Suggested Anti-Jundm2 Antibody Titration: 0.2-1 μ g/ml

Positive Control: Mouse Heart