

Hes7 Antibody - N-terminal region
Rabbit Polyclonal Antibody
Catalog # AI11213

Specification

Hes7 Antibody - N-terminal region - Product Information

Application	WB
Primary Accession	Q8BKT2
Other Accession	NM_033041 , NP_149030
Reactivity	Human, Mouse, Rat, Rabbit, Pig, Horse, Bovine, Dog
Predicted	Human, Mouse, Rat, Rabbit, Pig, Horse, Bovine, Dog
Host	Rabbit
Clonality	Polyclonal
Calculated MW	25kDa kDa

Hes7 Antibody - N-terminal region - Additional Information

Gene ID 84653

Alias Symbol bHLHb37

Other Names

Transcription factor HES-7, mHes7, Hairy and enhancer of split 7, bHLH factor Hes7, Hes7

Format

Liquid. Purified antibody supplied in 1x PBS buffer with 0.09% (w/v) sodium azide and 2% sucrose.

Reconstitution & Storage

Add 50 ul of distilled water. Final anti-Hes7 antibody concentration is 1 mg/ml in PBS buffer with 2% sucrose. For longer periods of storage, store at 20°C. Avoid repeat freeze-thaw cycles.

Precautions

Hes7 Antibody - N-terminal region is for research use only and not for use in diagnostic or therapeutic procedures.

Hes7 Antibody - N-terminal region - Protein Information

Name Hes7

Function

Transcriptional repressor. Represses transcription from both N box- and E box-containing promoters. May with HES1, cooperatively regulate somite formation in the presomitic mesoderm (PSM). May function as a segmentation clock, which is essential for coordinated somite segmentation.

Cellular Location

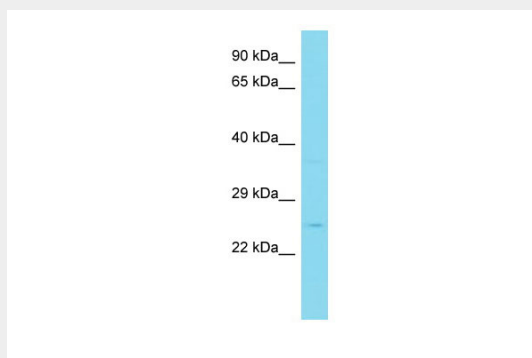
Nucleus.

Hes7 Antibody - N-terminal region - Protocols

Provided below are standard protocols that you may find useful for product applications.

- [Western Blot](#)
- [Blocking Peptides](#)
- [Dot Blot](#)
- [Immunohistochemistry](#)
- [Immunofluorescence](#)
- [Immunoprecipitation](#)
- [Flow Cytometry](#)
- [Cell Culture](#)

Hes7 Antibody - N-terminal region - Images



Host: Rabbit

Target Name: Hes7

Sample Tissue: Mouse Stomach lysates

Antibody Dilution: 1.0 μ g/ml