

TCF23 antibody - C-terminal region
Rabbit Polyclonal Antibody
Catalog # AI11214**Specification**

TCF23 antibody - C-terminal region - Product Information

Application	WB
Primary Accession	O9JLR5
Other Accession	NM_053085 , NP_444315
Reactivity	Mouse
Predicted	Mouse
Host	Rabbit
Clonality	Polyclonal
Calculated MW	23kDa KDa

TCF23 antibody - C-terminal region - Additional Information**Gene ID** 69852**Alias Symbol** Out, bHLHa24, 2010002O16Rik**Other Names**

Transcription factor 23, TCF-23, Basic helix-loop-helix transcription factor OUT, Ovary, uterus and testis protein, Tcf23, Out

Format

Liquid. Purified antibody supplied in 1x PBS buffer with 0.09% (w/v) sodium azide and 2% sucrose.

Reconstitution & Storage

Add 100 ul of distilled water. Final anti-TCF23 antibody concentration is 1 mg/ml in PBS buffer with 2% sucrose. For longer periods of storage, store at 20°C. Avoid repeat freeze-thaw cycles.

Precautions

TCF23 antibody - C-terminal region is for research use only and not for use in diagnostic or therapeutic procedures.

TCF23 antibody - C-terminal region - Protein Information**Name** Tcf23**Synonyms** Out**Function**

Inhibits E-box-mediated binding and transactivation of bHLH factors. Inhibitory effect is similar to that of ID proteins. Inhibits the formation of TCF3 and MYOD1 homodimers and heterodimers. Lacks DNA binding activity. May be involved in the regulation or modulation of smooth muscle contraction of the uterus during pregnancy and particularly around the time of delivery. Seems to play a role in the inhibition of myogenesis.

Cellular Location

Nucleus {ECO:0000255|PROSITE-ProRule:PRU00981, ECO:0000269|PubMed:10652346}

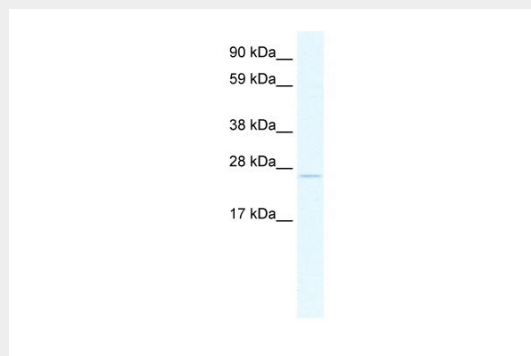
Tissue Location

Highly expressed in the uterus (predominantly in myometrium), ovary, and testis. Expression in the uterus is higher in the diestrus phase than in the estrus phase and reaches a maximum at 7.5 dpc. Expression declines towards the time of delivery and returns to the non-pregnant level 4 days after delivery. Low expression seen in lung, heart, intestine, and spleen.

TCF23 antibody - C-terminal region - Protocols

Provided below are standard protocols that you may find useful for product applications.

- [Western Blot](#)
- [Blocking Peptides](#)
- [Dot Blot](#)
- [Immunohistochemistry](#)
- [Immunofluorescence](#)
- [Immunoprecipitation](#)
- [Flow Cytometry](#)
- [Cell Culture](#)

TCF23 antibody - C-terminal region - Images

WB Suggested Anti-TCF23 Antibody Titration: 2.5µg/ml

ELISA Titer: 1:62500

Positive Control: SP2/0 cell lysate

TCF23 antibody - C-terminal region - References

Tachibana, M., et al., (2003) Cytogenet. Cell Genet. 94 (1-2), 23-25
Reconstitution and Storage: For short term use, store at 2-8°C up to 1 week. For long term storage, store at -20°C in small aliquots to prevent freeze-thaw cycles.