

**Rbm9 antibody - C-terminal region**  
**Rabbit Polyclonal Antibody**  
**Catalog # AI11215****Specification**

---

**Rbm9 antibody - C-terminal region - Product Information**

Application	WB
Primary Accession	<a href="#">Q8BP71</a>
Other Accession	<a href="#">NM_053104</a> , <a href="#">NP_444334</a>
Reactivity	Human, Mouse, Rat, Rabbit, Zebrafish, Pig, Horse, Bovine, Dog
Predicted Host	Human, Rat
Clonality	Rabbit
Calculated MW	Polyclonal 47kDa KDa

**Rbm9 antibody - C-terminal region - Additional Information****Gene ID** 93686**Alias Symbol** 2810460A15Rik, AA407676, AI118529, Fbm2, Fxh, Hrnbp2, Rbm9**Other Names**

RNA binding protein fox-1 homolog 2, Fox-1 homolog B, Fox-1 homolog Fxh, Hexaribonucleotide-binding protein 2, RNA-binding motif protein 9, RNA-binding protein 9, Rbfox2, Fox2, Fxh, Hrnbp2, Rbm9

**Format**

Liquid. Purified antibody supplied in 1x PBS buffer with 0.09% (w/v) sodium azide and 2% sucrose.

**Reconstitution & Storage**

Add 50 ul of distilled water. Final anti-Rbm9 antibody concentration is 1 mg/ml in PBS buffer with 2% sucrose. For longer periods of storage, store at 20°C. Avoid repeat freeze-thaw cycles.

**Precautions**

Rbm9 antibody - C-terminal region is for research use only and not for use in diagnostic or therapeutic procedures.

**Rbm9 antibody - C-terminal region - Protein Information****Name** Rbfox2**Synonyms** Fox2, Fxh, Hrnbp2, Rbm9**Function**

RNA-binding protein that regulates alternative splicing events by binding to 5'-UGCAUGU-3' elements. Prevents binding of U2AF2 to the 3'-splice site. Regulates alternative splicing of tissue-specific exons and of differentially spliced exons during erythropoiesis. Seems to act as a

coregulatory factor of ER-alpha (By similarity). Together with RNA binding proteins RBPMS and MBNL1/2, activates vascular smooth muscle cells alternative splicing events (By similarity).

**Cellular Location**

Nucleus. Cytoplasm.

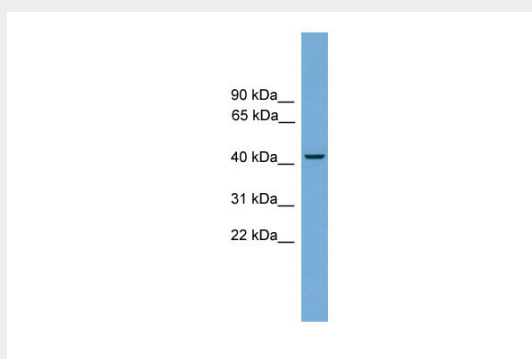
**Tissue Location**

Detected in brain neurons (at protein level). Detected in heart, brain, embryo, lung, liver, kidney and ovary

**Rbm9 antibody - C-terminal region - Protocols**

Provided below are standard protocols that you may find useful for product applications.

- [Western Blot](#)
- [Blocking Peptides](#)
- [Dot Blot](#)
- [Immunohistochemistry](#)
- [Immunofluorescence](#)
- [Immunoprecipitation](#)
- [Flow Cytometry](#)
- [Cell Culture](#)

**Rbm9 antibody - C-terminal region - Images**

WB Suggested Anti-Rbm9 Antibody Titration: 0.2-1 µg/ml  
Positive Control: Mouse Heart