

**Ptges2 Antibody - N-terminal region**  
**Rabbit Polyclonal Antibody**  
**Catalog # AI11226****Specification**

---

**Ptges2 Antibody - N-terminal region - Product Information**

Application	WB
Primary Accession	<a href="#">Q8BWM0</a>
Other Accession	<a href="#">NM_133783</a> , <a href="#">NP_598544</a>
Reactivity	Human, Mouse, Rat
Predicted	Human, Mouse, Rat
Host	Rabbit
Clonality	Polyclonal
Calculated MW	43kDa KDa

**Ptges2 Antibody - N-terminal region - Additional Information****Gene ID** 96979**Alias Symbol** 0610038H10Rik, C79137, Gbf1, Mpges2, Pges2**Other Names**

Prostaglandin E synthase 2, 5.3.99.3, GATE-binding factor 1, GBF-1, Microsomal prostaglandin E synthase 2, mPGES-2, Prostaglandin E synthase 2 truncated form, Ptges2, Gbf1, Pges2

**Format**

Liquid. Purified antibody supplied in 1x PBS buffer with 0.09% (w/v) sodium azide and 2% sucrose.

**Reconstitution & Storage**

Add 50 ul of distilled water. Final anti-Ptges2 antibody concentration is 1 mg/ml in PBS buffer with 2% sucrose. For longer periods of storage, store at 20°C. Avoid repeat freeze-thaw cycles.

**Precautions**

Ptges2 Antibody - N-terminal region is for research use only and not for use in diagnostic or therapeutic procedures.

**Ptges2 Antibody - N-terminal region - Protein Information****Name** Ptges2**Synonyms** Gbf1, Pges2**Function**

Isomerase that catalyzes the conversion of PGH2 into the more stable prostaglandin E2 (PGE2) (in vitro). The biological function and the GSH-dependent property of PTGES2 is still under debate (By similarity). In vivo, PTGES2 could form a complex with GSH and heme and would not participate in PGE2 synthesis but would catalyze the degradation of prostaglandin E2 H2 (PGH2) to 12(S)-hydroxy- 5(Z),8(E),10(E)-heptadecatrienoic acid (HHT) and malondialdehyde (MDA) (By

similarity). May also have transactivation activity toward IFN- gamma (IFNG), possibly via an interaction with CEBPB; however, the relevance of transcription activation activity remains unclear (PubMed:<a href="http://www.uniprot.org/citations/12050152" target="\_blank">12050152</a>).

#### Cellular Location

Golgi apparatus membrane {ECO:0000250|UniProtKB:Q9H7Z7}; Single-pass membrane protein {ECO:0000250|UniProtKB:Q9H7Z7}. Nucleus Note=According to PubMed:12050152, some fraction may be nuclear

#### Tissue Location

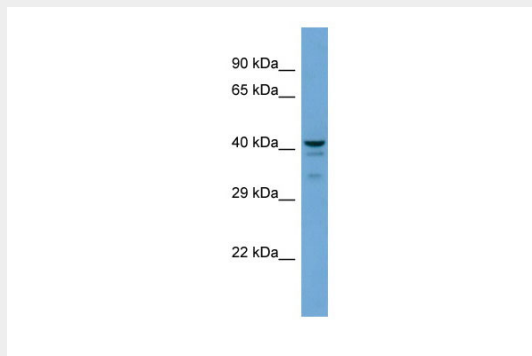
Widely expressed. Expressed in brain, heart, liver, colon and lung.

### Ptges2 Antibody - N-terminal region - Protocols

Provided below are standard protocols that you may find useful for product applications.

- [Western Blot](#)
- [Blocking Peptides](#)
- [Dot Blot](#)
- [Immunohistochemistry](#)
- [Immunofluorescence](#)
- [Immunoprecipitation](#)
- [Flow Cytometry](#)
- [Cell Culture](#)

### Ptges2 Antibody - N-terminal region - Images



Host: Rabbit  
Target Name: Ptges2  
Sample Tissue: Mouse Brain lysates  
Antibody Dilution: 1.0µg/ml