

Cbfa2t2 antibody - middle region
Rabbit Polyclonal Antibody
Catalog # AI11244**Specification**

Cbfa2t2 antibody - middle region - Product Information

Application	WB
Primary Accession	O70374
Other Accession	NM_172860 , NP_766448
Reactivity	Human, Mouse, Rat, Rabbit, Pig, Horse, Bovine, Dog
Predicted Host	Human, Mouse, Rat, Rabbit, Pig, Bovine
Clonality	Rabbit
Calculated MW	Polyclonal 66kDa KDa

Cbfa2t2 antibody - middle region - Additional Information**Gene ID** 12396**Alias Symbol** **A430091M07, C330013D05Rik, Cbfa2t2h, MTGR1****Other Names**

Protein CBFA2T2, MTG8-like protein, MTG8-related protein 1, Cbfa2t2, Cbfa2t2h, Mtgr1

Format

Liquid. Purified antibody supplied in 1x PBS buffer with 0.09% (w/v) sodium azide and 2% sucrose.

Reconstitution & Storage

Add 50 ul of distilled water. Final anti-Cbfa2t2 antibody concentration is 1 mg/ml in PBS buffer with 2% sucrose. For longer periods of storage, store at 20°C. Avoid repeat freeze-thaw cycles.

Precautions

Cbfa2t2 antibody - middle region is for research use only and not for use in diagnostic or therapeutic procedures.

Cbfa2t2 antibody - middle region - Protein Information**Name** Cbfa2t2**Synonyms** Cbfa2t2h, Mtgr1**Function**

Transcriptional corepressor which facilitates transcriptional repression via its association with DNA-binding transcription factors and recruitment of other corepressors and histone-modifying enzymes. Via association with PRDM14 is involved in regulation of embryonic stem cell (ESC) pluripotency. Involved in primordial germ cell (PCG) formation (PubMed:27281218). Stabilizes

PRDM14 and OCT4 on chromatin in a homooligomerization-dependent manner. Can repress the expression of MMP7 in a ZBTB33-dependent manner (By similarity). Through heteromerization with CBFA2T3/MTG16 may be involved in regulation of the proliferation and the differentiation of erythroid progenitors by repressing the expression of TAL1 target genes (PubMed: [19799863](http://www.uniprot.org/citations/19799863)). Required for the maintenance of the secretory cell lineage in the small intestine (PubMed: [16227606](http://www.uniprot.org/citations/16227606)). Can inhibit Notch signaling probably by association with RBPJ and may be involved in GFI1-mediated Paneth cell differentiation (PubMed: [25398765](http://www.uniprot.org/citations/25398765)).

Cellular Location

Nucleus {ECO:0000255|PROSITE-ProRule:PRU00440}.

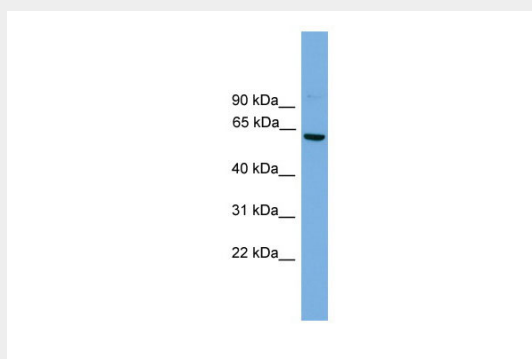
Tissue Location

Expressed in embryonic stem cells.

Cbfa2t2 antibody - middle region - Protocols

Provided below are standard protocols that you may find useful for product applications.

- [Western Blot](#)
- [Blocking Peptides](#)
- [Dot Blot](#)
- [Immunohistochemistry](#)
- [Immunofluorescence](#)
- [Immunoprecipitation](#)
- [Flow Cytometry](#)
- [Cell Culture](#)

Cbfa2t2 antibody - middle region - Images

WB Suggested Anti-Cbfa2t2 Antibody Titration: 0.2-1 µg/ml

ELISA Titer: 1:1562500

Positive Control: Mouse Brain