

Rbfox2 Antibody - N-terminal region
Rabbit Polyclonal Antibody
Catalog # AI11251**Specification**

Rbfox2 Antibody - N-terminal region - Product Information

Application	WB
Primary Accession	Q8BP71
Other Accession	NM_001110827 , NP_001104297
Reactivity	Human, Mouse, Rat, Pig
Predicted	Human, Mouse, Rat, Pig
Host	Rabbit
Clonality	Polyclonal
Calculated MW	47kDa KDa

Rbfox2 Antibody - N-terminal region - Additional Information**Gene ID** 93686**Alias Symbol** 2810460A15Rik, AA407676, AI118529, Fbm2, Fxh, Hrnbp2, Rbm9**Other Names**

RNA binding protein fox-1 homolog 2, Fox-1 homolog B, Fox-1 homolog Fxh, Hexaribonucleotide-binding protein 2, RNA-binding motif protein 9, RNA-binding protein 9, Rbfox2, Fox2, Fxh, Hrnbp2, Rbm9

Format

Liquid. Purified antibody supplied in 1x PBS buffer with 0.09% (w/v) sodium azide and 2% sucrose.

Reconstitution & Storage

Add 50 ul of distilled water. Final anti-Rbfox2 antibody concentration is 1 mg/ml in PBS buffer with 2% sucrose. For longer periods of storage, store at 20°C. Avoid repeat freeze-thaw cycles.

Precautions

Rbfox2 Antibody - N-terminal region is for research use only and not for use in diagnostic or therapeutic procedures.

Rbfox2 Antibody - N-terminal region - Protein Information**Name** Rbfox2**Synonyms** Fox2, Fxh, Hrnbp2, Rbm9**Function**

RNA-binding protein that regulates alternative splicing events by binding to 5'-UGCAUGU-3' elements. Prevents binding of U2AF2 to the 3'-splice site. Regulates alternative splicing of tissue-specific exons and of differentially spliced exons during erythropoiesis. Seems to act as a coregulatory factor of ER-alpha (By similarity). Together with RNA binding proteins RBPMS and

MBNL1/2, activates vascular smooth muscle cells alternative splicing events (By similarity).

Cellular Location

Nucleus. Cytoplasm.

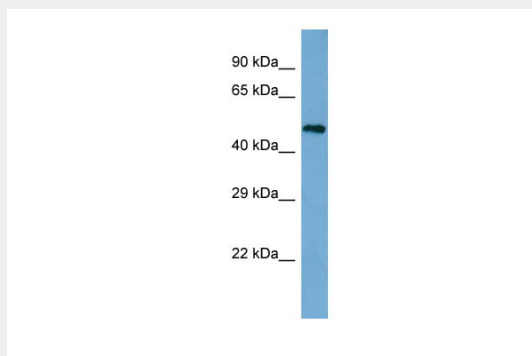
Tissue Location

Detected in brain neurons (at protein level). Detected in heart, brain, embryo, lung, liver, kidney and ovary

Rbfox2 Antibody - N-terminal region - Protocols

Provided below are standard protocols that you may find useful for product applications.

- [Western Blot](#)
- [Blocking Peptides](#)
- [Dot Blot](#)
- [Immunohistochemistry](#)
- [Immunofluorescence](#)
- [Immunoprecipitation](#)
- [Flow Cytometry](#)
- [Cell Culture](#)

Rbfox2 Antibody - N-terminal region - Images

Host: Rabbit

Target Name: Rbfox2

Sample Tissue: NIH-3T3 Whole cell lysate

s

Antibody Dilution: 1.0µg/ml