

L3mbtl antibody - middle region
Rabbit Polyclonal Antibody
Catalog # AI11293**Specification**

L3mbtl antibody - middle region - Product Information

Application	WB
Primary Accession	A2A5N8
Other Accession	XM_485097 , XP_485097
Reactivity	Human, Mouse, Rat, Rabbit, Horse, Dog
Predicted	Rabbit, Dog
Host	Rabbit
Clonality	Polyclonal
Calculated MW	67kDa KDa

L3mbtl antibody - middle region - Additional Information**Gene ID** 241764**Alias Symbol** C630004G01, KIAA0681, L3MBTL1, mKIAA0681, L3mbtl**Other Names**

Lethal(3)malignant brain tumor-like protein 1, H-l(3)mbt, H-l(3)mbt protein, L(3)mbt-like, L(3)mbt protein homolog, L3mbtl1, Kiaa0681, L3mbt, L3mbtl

Format

Liquid. Purified antibody supplied in 1x PBS buffer with 0.09% (w/v) sodium azide and 2% sucrose.

Reconstitution & Storage

Add 50 ul of distilled water. Final anti-L3mbtl antibody concentration is 1 mg/ml in PBS buffer with 2% sucrose. For longer periods of storage, store at 20°C. Avoid repeat freeze-thaw cycles.

Precautions

L3mbtl antibody - middle region is for research use only and not for use in diagnostic or therapeutic procedures.

L3mbtl antibody - middle region - Protein Information**Name** L3mbtl1**Synonyms** Kiaa0681, L3mbt, L3mbtl**Function**

Polycomb group (PcG) protein that specifically recognizes and binds mono- and dimethyllysine residues on target proteins, thereby acting as a 'reader' of a network of post-translational modifications. PcG proteins maintain the transcriptionally repressive state of genes: acts as a chromatin compaction factor by recognizing and binding mono- and dimethylated histone H1b/H1-4 at 'Lys-26' (H1bK26me1 and H1bK26me2) and histone H4 at 'Lys-20' (H4K20me1 and

H4K20me2), leading to condense chromatin and repress transcription. Recognizes and binds p53/TP53 monomethylated at 'Lys-382', leading to repress p53/TP53- target genes. Also recognizes and binds RB1/RB monomethylated at 'Lys- 860'. Participates in the ETV6-mediated repression. Probably plays a role in cell proliferation. Overexpression induces multinucleated cells, suggesting that it is required to accomplish normal mitosis (By similarity).

Cellular Location

Nucleus. Note=Excluded from the nucleolus. Does not colocalize with the PcG protein BMI1, suggesting that these two proteins do not belong to the same complex (By similarity).

Tissue Location

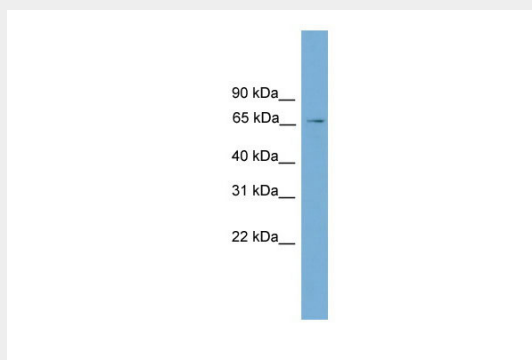
Highly expressed in brain, testis, eyes, and ES cells.

L3mbtl antibody - middle region - Protocols

Provided below are standard protocols that you may find useful for product applications.

- [Western Blot](#)
- [Blocking Peptides](#)
- [Dot Blot](#)
- [Immunohistochemistry](#)
- [Immunofluorescence](#)
- [Immunoprecipitation](#)
- [Flow Cytometry](#)
- [Cell Culture](#)

L3mbtl antibody - middle region - Images



WB Suggested Anti-L3mbtl Antibody Titration: 0.2-1 µg/ml
Positive Control: Mouse Kidney