

Eomes antibody - middle region
Rabbit Polyclonal Antibody
Catalog # AI11327**Specification**

Eomes antibody - middle region - Product Information

Application	WB
Primary Accession	O54839
Other Accession	NM_010136 , NP_034266
Reactivity	Human, Mouse, Rat, Rabbit, Pig, Horse, Bovine, Dog
Predicted Host	Human, Mouse, Pig, Bovine
Clonality	Rabbit
Calculated MW	Polyclonal 75kDa KDa

Eomes antibody - middle region - Additional Information**Gene ID** 13813**Alias Symbol** C77258, Tbr2, TBR-2
Other Names
Eomesodermin homolog, T-box brain protein 2, T-brain-2, TBR-2, Eomes, Tbr2**Format**

Liquid. Purified antibody supplied in 1x PBS buffer with 0.09% (w/v) sodium azide and 2% sucrose.

Reconstitution & Storage

Add 50 ul of distilled water. Final anti-Eomes antibody concentration is 1 mg/ml in PBS buffer with 2% sucrose. For longer periods of storage, store at 20°C. Avoid repeat freeze-thaw cycles.

Precautions

Eomes antibody - middle region is for research use only and not for use in diagnostic or therapeutic procedures.

Eomes antibody - middle region - Protein Information**Name** Eomes**Synonyms** Tbr2**Function**

Functions as a transcriptional activator playing a crucial role during development. Functions in trophoblast differentiation and later in gastrulation, regulating both mesoderm delamination and endoderm specification. Plays a role in brain development being required for the specification and the proliferation of the intermediate progenitor cells and their progeny in the cerebral cortex. Also involved in the differentiation of CD8+ T-cells during immune response regulating the expression of lytic effector genes.

Cellular Location

Nucleus.

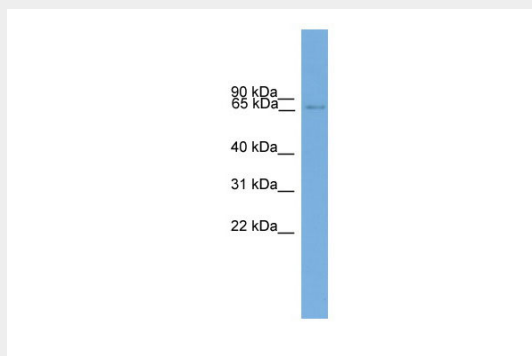
Tissue Location

Expressed in CD8+ T-cells.

Eomes antibody - middle region - Protocols

Provided below are standard protocols that you may find useful for product applications.

- [Western Blot](#)
- [Blocking Peptides](#)
- [Dot Blot](#)
- [Immunohistochemistry](#)
- [Immunofluorescence](#)
- [Immunoprecipitation](#)
- [Flow Cytometry](#)
- [Cell Culture](#)

Eomes antibody - middle region - Images

WB Suggested Anti-Eomes Antibody Titration: 0.2-1 µg/ml

Positive Control: Mouse Muscle