

BLOC1S1 Antibody - N-terminal region
Rabbit Polyclonal Antibody
Catalog # AI11354**Specification**

BLOC1S1 Antibody - N-terminal region - Product Information

Application	WB
Primary Accession	P78537
Other Accession	NM_001487 , NP_001478
Reactivity	Human, Mouse, Rat, Rabbit, Zebrafish, Pig, Horse, Bovine, Dog
Predicted Host	Human, Mouse, Rat, Rabbit, Zebrafish, Pig
Clonality	Rabbit
Calculated MW	Polyclonal 16kDa KDa

BLOC1S1 Antibody - N-terminal region - Additional Information**Gene ID 2647**

Alias Symbol	BLOS1, GCN5L1, MICoA, RT14
Other Names	

Biogenesis of lysosome-related organelles complex 1 subunit 1, BLOC-1 subunit 1, GCN5-like protein 1, Protein RT14, BLOC1S1, BLOS1, GCN5L1, RT14

Format

Liquid. Purified antibody supplied in 1x PBS buffer with 0.09% (w/v) sodium azide and 2% sucrose.

Reconstitution & Storage

Add 50 ul of distilled water. Final anti-BLOC1S1 antibody concentration is 1 mg/ml in PBS buffer with 2% sucrose. For longer periods of storage, store at 20°C. Avoid repeat freeze-thaw cycles.

Precautions

BLOC1S1 Antibody - N-terminal region is for research use only and not for use in diagnostic or therapeutic procedures.

BLOC1S1 Antibody - N-terminal region - Protein Information

Name BLOC1S1

Synonyms BLOS1, GCN5L1, RT14

Function

Component of the BLOC-1 complex, a complex that is required for normal biogenesis of lysosome-related organelles (LRO), such as platelet dense granules and melanosomes. In concert with the AP-3 complex, the BLOC-1 complex is required to target membrane protein cargos into vesicles assembled at cell bodies for delivery into neurites and nerve terminals. The BLOC-1 complex, in association with SNARE proteins, is also proposed to be involved in neurite extension

(PubMed:17182842). As part of the BORC complex may play a role in lysosomes movement and localization at the cell periphery. Associated with the cytosolic face of lysosomes, the BORC complex may recruit ARL8B and couple lysosomes to microtubule plus-end-directed kinesin motor (PubMed:25898167).

Cellular Location

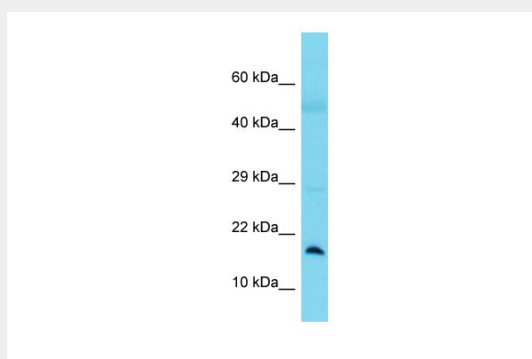
Mitochondrion intermembrane space. Mitochondrion matrix. Cytoplasm, cytosol. Lysosome membrane

BLOC1S1 Antibody - N-terminal region - Protocols

Provided below are standard protocols that you may find useful for product applications.

- [Western Blot](#)
- [Blocking Peptides](#)
- [Dot Blot](#)
- [Immunohistochemistry](#)
- [Immunofluorescence](#)
- [Immunoprecipitation](#)
- [Flow Cytometry](#)
- [Cell Culture](#)

BLOC1S1 Antibody - N-terminal region - Images



Host: Rabbit
Target Name: BLOC1S1
Sample Tissue: Lung Tumor lysates
Antibody Dilution: 1.0µg/ml