

MNAT1 antibody - C-terminal region
Rabbit Polyclonal Antibody
Catalog # AI11372**Specification**

MNAT1 antibody - C-terminal region - Product Information

Application	WB
Primary Accession	P51948
Other Accession	NM_002431 , NP_002422
Reactivity	Human, Mouse, Rat, Rabbit, Zebrafish, Horse, Bovine, Dog
Predicted	Human, Rat, Zebrafish, Pig, Chicken, Bovine, Dog
Host	Rabbit
Clonality	Polyclonal
Calculated MW	36kDa KDa

MNAT1 antibody - C-terminal region - Additional Information**Gene ID** 4331**Alias Symbol** **MAT1, TFB3, CAP35, RNF66****Other Names**

CDK-activating kinase assembly factor MAT1, CDK7/cyclin-H assembly factor, Cyclin-G1-interacting protein, Menage a trois, RING finger protein 66, RING finger protein MAT1, p35, p36, MNAT1, CAP35, MAT1, RNF66

Format

Liquid. Purified antibody supplied in 1x PBS buffer with 0.09% (w/v) sodium azide and 2% sucrose.

Reconstitution & Storage

Add 100 ul of distilled water. Final anti-MNAT1 antibody concentration is 1 mg/ml in PBS buffer with 2% sucrose. For longer periods of storage, store at 20°C. Avoid repeat freeze-thaw cycles.

Precautions

MNAT1 antibody - C-terminal region is for research use only and not for use in diagnostic or therapeutic procedures.

MNAT1 antibody - C-terminal region - Protein Information**Name** MNAT1**Synonyms** CAP35, MAT1, RNF66**Function**

Stabilizes the cyclin H-CDK7 complex to form a functional CDK-activating kinase (CAK) enzymatic complex. CAK activates the cyclin-associated kinases CDK1, CDK2, CDK4 and CDK6 by threonine phosphorylation. CAK complexed to the core-TFIIF basal transcription factor activates RNA

polymerase II by serine phosphorylation of the repetitive C-terminal domain (CTD) of its large subunit (POLR2A), allowing its escape from the promoter and elongation of the transcripts. Involved in cell cycle control and in RNA transcription by RNA polymerase II.

Cellular Location

Nucleus.

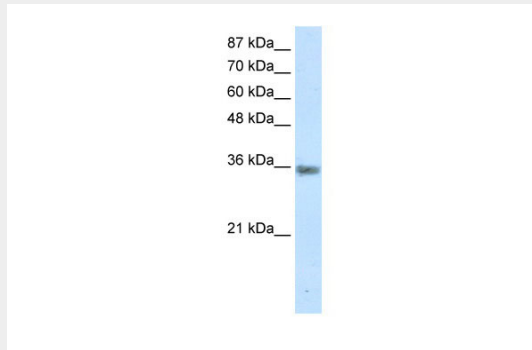
Tissue Location

Highest levels in colon and testis. Moderate levels are present thymus, prostate, ovary, and small intestine. The lowest levels are found in spleen and leukocytes

MNAT1 antibody - C-terminal region - Protocols

Provided below are standard protocols that you may find useful for product applications.

- [Western Blot](#)
- [Blocking Peptides](#)
- [Dot Blot](#)
- [Immunohistochemistry](#)
- [Immunofluorescence](#)
- [Immunoprecipitation](#)
- [Flow Cytometry](#)
- [Cell Culture](#)

MNAT1 antibody - C-terminal region - Images

WB Suggested Anti-MNAT1 Antibody Titration: 1.25µg/ml

Positive Control: Jurkat cell lysate

MNAT1 is supported by BioGPS gene expression data to be expressed in Jurkat

MNAT1 antibody - C-terminal region - References

Zhou, M., (2003) Proc. Natl. Acad. Sci. U.S.A. 100 (22), 12666-12671
Reconstitution and Storage: For short term use, store at 2-8°C up to 1 week. For long term storage, store at -20°C in small aliquots to prevent freeze-thaw cycles.