

ZNF259 antibody - N-terminal region
Rabbit Polyclonal Antibody
Catalog # AI11408**Specification**

ZNF259 antibody - N-terminal region - Product Information

Application	WB
Primary Accession	O75312
Other Accession	NM_003904 , NP_003895
Reactivity	Human, Mouse, Rat, Rabbit, Zebrafish, Horse, Bovine, Dog
Predicted Host	Human, Dog
Clonality	Rabbit
Calculated MW	Polyclonal 51kDa KDa

ZNF259 antibody - N-terminal region - Additional Information**Gene ID** 8882**Alias Symbol** **ZPR1**
Other Names
Zinc finger protein ZPR1, Zinc finger protein 259, ZPR1, ZNF259**Format**

Liquid. Purified antibody supplied in 1x PBS buffer with 0.09% (w/v) sodium azide and 2% sucrose.

Reconstitution & Storage

Add 50 ul of distilled water. Final anti-ZNF259 antibody concentration is 1 mg/ml in PBS buffer with 2% sucrose. For longer periods of storage, store at 20°C. Avoid repeat freeze-thaw cycles.

Precautions

ZNF259 antibody - N-terminal region is for research use only and not for use in diagnostic or therapeutic procedures.

ZNF259 antibody - N-terminal region - Protein Information**Name** ZPR1**Synonyms** ZNF259**Function**Acts as a signaling molecule that communicates proliferative growth signals from the cytoplasm to the nucleus. It is involved in the positive regulation of cell cycle progression (PubMed: [29851065](http://www.uniprot.org/citations/29851065)). Plays a role for the localization and accumulation of the survival motor neuron protein SMN1 in sub-nuclear bodies, including gems and Cajal bodies. Induces neuron differentiation and stimulates axonal growth and formation of growth cone in spinal cord motor neurons. Plays a role in the splicing of

cellular pre-mRNAs. May be involved in H₂O₂-induced neuronal cell death.

Cellular Location

Nucleus, Nucleus, nucleolus. Nucleus, gem. Nucleus, Cajal body. Cytoplasm, perinuclear region. Cytoplasm. Cell projection, axon. Cell projection, growth cone. Note=Colocalized with SMN1 in Gemini of coiled bodies (gems), Cajal bodies, axon and growth cones of neurons (By similarity) Localized predominantly in the cytoplasm in serum-starved cells growth arrested in G₀ of the mitotic cell cycle. Localized both in the nucleus and cytoplasm at the G₁ phase of the mitotic cell cycle. Accumulates in the subnuclear bodies during progression into the S phase of the mitotic cell cycle. Diffusely localized throughout the cell during mitosis. Colocalized with NPAT and SMN1 in nuclear bodies including gems (Gemini of coiled bodies) and Cajal bodies in a cell cycle-dependent manner. Translocates together with EEF1A1 from the cytoplasm to the nucleolus after treatment with mitogens. Colocalized with EGFR in the cytoplasm of quiescent cells. Translocates from the cytoplasm to the nucleus in a epidermal growth factor (EGF)-dependent manner

Tissue Location

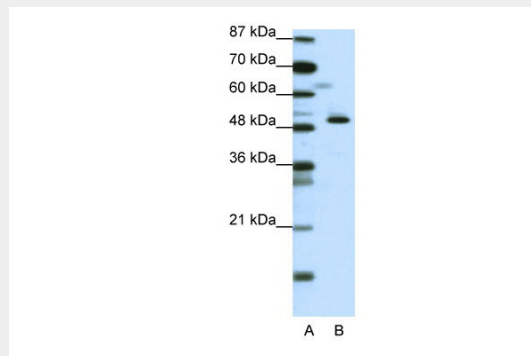
Expressed in fibroblast; weakly expressed in fibroblast of spinal muscular atrophy (SMA) patients

ZNF259 antibody - N-terminal region - Protocols

Provided below are standard protocols that you may find useful for product applications.

- [Western Blot](#)
- [Blocking Peptides](#)
- [Dot Blot](#)
- [Immunohistochemistry](#)
- [Immunofluorescence](#)
- [Immunoprecipitation](#)
- [Flow Cytometry](#)
- [Cell Culture](#)

ZNF259 antibody - N-terminal region - Images



WB Suggested Anti-ZNF259 Antibody Titration: 0.2-1 µg/ml

ELISA Titer: 1:312500

Positive Control: Jurkat cell lysate

ZNF259 is supported by BioGPS gene expression data to be expressed in Jurkat

ZNF259 antibody - N-terminal region - References

Gangwani, L., et al., (2005) Mol. Cell. Biol. 25 (7), 2744-2756
Reconstitution and Storage: For short term use, store at 2-8C up to 1 week. For long term storage, store at -20C in small aliquots to prevent freeze-thaw cycles.