

Nfkbil1 antibody - C-terminal region
Rabbit Polyclonal Antibody
Catalog # AI11425**Specification**

Nfkbil1 antibody - C-terminal region - Product Information

Application	WB
Primary Accession	O88995
Other Accession	NM_010909 , NP_035039
Reactivity	Human, Mouse, Rat, Pig, Goat, Horse, Bovine, Dog
Predicted Host	Mouse, Bovine, Dog
Clonality	Rabbit
Calculated MW	Polyclonal 43kDa KDa

Nfkbil1 antibody - C-terminal region - Additional Information**Gene ID** 18038**Alias Symbol** Def-7, IKBL**Other Names**

NF-kappa-B inhibitor-like protein 1, Inhibitor of kappa B-like protein, I-kappa-B-like protein, IkappaBL, Nuclear factor of kappa light polypeptide gene enhancer in B-cells inhibitor-like 1, Nfkbil1, Ikbl

Format

Liquid. Purified antibody supplied in 1x PBS buffer with 0.09% (w/v) sodium azide and 2% sucrose.

Reconstitution & Storage

Add 50 ul of distilled water. Final anti-Nfkbil1 antibody concentration is 1 mg/ml in PBS buffer with 2% sucrose. For longer periods of storage, store at 20°C. Avoid repeat freeze-thaw cycles.

Precautions

Nfkbil1 antibody - C-terminal region is for research use only and not for use in diagnostic or therapeutic procedures.

Nfkbil1 antibody - C-terminal region - Protein Information**Name** Nfkbil1**Synonyms** Ikbl**Function**

Involved in the regulation of innate immune response. Acts as negative regulator of Toll-like receptor and interferon-regulatory factor (IRF) signaling pathways. Contributes to the negative regulation of transcriptional activation of NF-kappa-B target genes in response to endogenous pro-inflammatory stimuli (By similarity).

Cellular Location

Nucleus. Note=Nuclear localization with a speckled expression pattern in some cells. Colocalizes with CACTIN in the nucleus (By similarity).

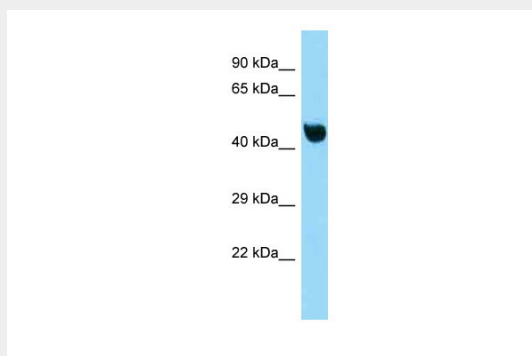
Tissue Location

High expression found in heart muscle, liver, kidney and skin. Not detected in spleen, lung and brain

Nfkbil1 antibody - C-terminal region - Protocols

Provided below are standard protocols that you may find useful for product applications.

- [Western Blot](#)
- [Blocking Peptides](#)
- [Dot Blot](#)
- [Immunohistochemistry](#)
- [Immunofluorescence](#)
- [Immunoprecipitation](#)
- [Flow Cytometry](#)
- [Cell Culture](#)

Nfkbil1 antibody - C-terminal region - Images

WB Suggested Anti-Nfkbil1 Antibody Titration: 1.0 µg/ml
Positive Control: Mouse Liver