

**ARID3A antibody - N-terminal region**  
**Rabbit Polyclonal Antibody**  
**Catalog # AI11434**

**Specification**

---

**ARID3A antibody - N-terminal region - Product Information**

Application	WB
Primary Accession	<a href="#">O99856</a>
Other Accession	<a href="#">NM_005224</a> , <a href="#">NP_005215</a>
Reactivity	Human, Mouse, Rat, Pig, Goat, Bovine, Dog
Predicted	Mouse, Rat, Bovine
Host	Rabbit
Clonality	Polyclonal
Calculated MW	63kDa KDa

**ARID3A antibody - N-terminal region - Additional Information**

**Gene ID** 1820

**Alias Symbol** BRIGHT, DRIL1, DRIL3, E2FBP1

**Other Names**

AT-rich interactive domain-containing protein 3A, ARID domain-containing protein 3A, B-cell regulator of IgH transcription, Bright, Dead ringer-like protein 1, E2F-binding protein 1, ARID3A, DRIL1, DRIL3, DRX, E2FBP1

**Format**

Liquid. Purified antibody supplied in 1x PBS buffer with 0.09% (w/v) sodium azide and 2% sucrose.

**Reconstitution & Storage**

Add 50 ul of distilled water. Final anti-ARID3A antibody concentration is 1 mg/ml in PBS buffer with 2% sucrose. For longer periods of storage, store at 20°C. Avoid repeat freeze-thaw cycles.

**Precautions**

ARID3A antibody - N-terminal region is for research use only and not for use in diagnostic or therapeutic procedures.

**ARID3A antibody - N-terminal region - Protein Information**

**Name** ARID3A

**Synonyms** DRIL1, DRIL3, DRX, E2FBP1

**Function**

Transcription factor which may be involved in the control of cell cycle progression by the RB1/E2F1 pathway and in B-cell differentiation.

**Cellular Location**

Nucleus {ECO:0000255|PROSITE-ProRule:PRU00355, ECO:0000269|PubMed:17400556}.

Cytoplasm Note=Shuttles between nucleus and cytoplasm

#### Tissue Location

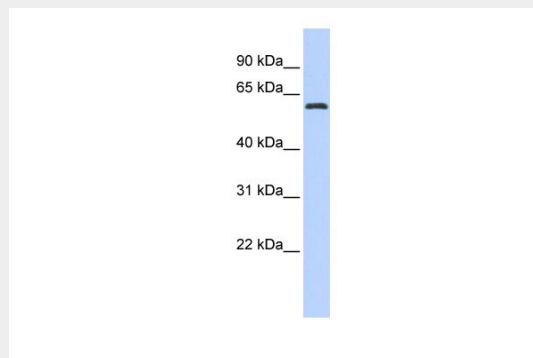
Widely expressed, with highest expression in skeletal muscle, thalamus, and colon

#### ARID3A antibody - N-terminal region - Protocols

Provided below are standard protocols that you may find useful for product applications.

- [Western Blot](#)
- [Blocking Peptides](#)
- [Dot Blot](#)
- [Immunohistochemistry](#)
- [Immunofluorescence](#)
- [Immunoprecipitation](#)
- [Flow Cytometry](#)
- [Cell Culture](#)

#### ARID3A antibody - N-terminal region - Images



WB Suggested Anti-ARID3A Antibody Titration: 0.2-1  $\mu$ g/ml

ELISA Titer: 1:312500

Positive Control: Human brain

#### ARID3A antibody - N-terminal region - References

Lin, D., (et al) Mol. Cancer 6, 23 (2007) Reconstitution and Storage: For short term use, store at 2-8C up to 1 week. For long term storage, store at -20C in small aliquots to prevent freeze-thaw cycles.