

KBTBD10 antibody - C-terminal region
Rabbit Polyclonal Antibody
Catalog # AI11453**Specification**

KBTBD10 antibody - C-terminal region - Product Information

Application	WB
Primary Accession	O60662
Other Accession	NM_006063 , NP_006054
Reactivity	Human, Mouse, Rat, Rabbit, Pig, Horse, Bovine, Dog
Predicted Host	Human, Mouse, Pig, Horse, Bovine, Dog
Clonality	Rabbit
Calculated MW	Polyclonal 68kDa KDa

KBTBD10 antibody - C-terminal region - Additional Information**Gene ID** 10324**Alias Symbol** **SARCOSIN, KBTBD10****Other Names**

Kelch-like protein 41, Kel-like protein 23, Kelch repeat and BTB domain-containing protein 10, Kelch-related protein 1, Sarcosin, KLHL41, KBTBD10, KRP1

Format

Liquid. Purified antibody supplied in 1x PBS buffer with 0.09% (w/v) sodium azide and 2% sucrose.

Reconstitution & Storage

Add 100 ul of distilled water. Final anti-KBTBD10 antibody concentration is 1 mg/ml in PBS buffer with 2% sucrose. For longer periods of storage, store at 20°C. Avoid repeat freeze-thaw cycles.

Precautions

KBTBD10 antibody - C-terminal region is for research use only and not for use in diagnostic or therapeutic procedures.

KBTBD10 antibody - C-terminal region - Protein Information**Name** KLHL41**Synonyms** KBTBD10, KRP1**Function**

Involved in skeletal muscle development and differentiation. Regulates proliferation and differentiation of myoblasts and plays a role in myofibril assembly by promoting lateral fusion of adjacent thin fibrils into mature, wide myofibrils. Required for pseudopod elongation in transformed cells.

Cellular Location

Cytoplasm. Cytoplasm, cytoskeleton {ECO:0000250|UniProtKB:A2AUC9}. Cell projection, pseudopodium {ECO:0000250|UniProtKB:Q9ER30}. Cell projection, ruffle {ECO:0000250|UniProtKB:Q9ER30}. Cytoplasm, myofibril, sarcomere, M line {ECO:0000250|UniProtKB:A2AUC9} Sarcoplasmic reticulum membrane Endoplasmic reticulum membrane Note=Predominantly cytoplasmic but can colocalize with F-actin at the membrane ruffle-like structures at the tips of transformation-specific pseudopodia.

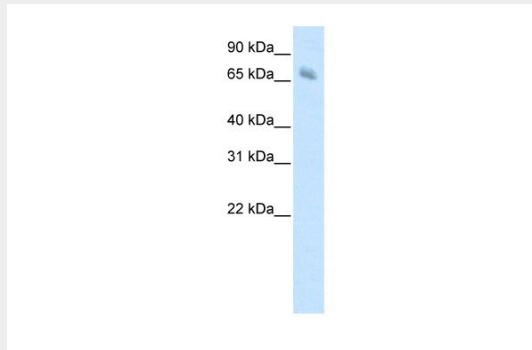
Tissue Location

Sarcomeric muscle.

KBTBD10 antibody - C-terminal region - Protocols

Provided below are standard protocols that you may find useful for product applications.

- [Western Blot](#)
- [Blocking Peptides](#)
- [Dot Blot](#)
- [Immunohistochemistry](#)
- [Immunofluorescence](#)
- [Immunoprecipitation](#)
- [Flow Cytometry](#)
- [Cell Culture](#)

KBTBD10 antibody - C-terminal region - Images

WB Suggested Anti-KBTBD10 Antibody Titration: 1.25µg/ml

ELISA Titer: 1:1562500

Positive Control: Human Muscle

KBTBD10 antibody - C-terminal region - References

Lim,D.S., et al., (2001) J. Am. Coll. Cardiol. 38 (4), 1175-1180
Reconstitution and Storage: For short term use, store at 2-8C up to 1 week. For long term storage, store at -20C in small aliquots to prevent freeze-thaw cycles.