

PROP1 antibody - middle region
Rabbit Polyclonal Antibody
Catalog # AI11458**Specification**

PROP1 antibody - middle region - Product Information

Application	WB
Primary Accession	O75360
Other Accession	NM_006261 , NP_006252
Reactivity	Human, Mouse, Rat, Rabbit, Pig, Sheep, Horse, Bovine, Dog
Predicted	Human, Mouse, Rat, Pig, Chicken, Sheep, Horse, Bovine, Dog
Host	Rabbit
Clonality	Polyclonal
Calculated MW	25kDa KDa

PROP1 antibody - middle region - Additional Information**Gene ID** 5626**Alias Symbol** CPHD2, PROP-1**Other Names**

Homeobox protein prophet of Pit-1, PROP-1, Pituitary-specific homeodomain factor, PROP1

Format

Liquid. Purified antibody supplied in 1x PBS buffer with 0.09% (w/v) sodium azide and 2% sucrose.

Reconstitution & Storage

Add 50 ul of distilled water. Final anti-PROP1 antibody concentration is 1 mg/ml in PBS buffer with 2% sucrose. For longer periods of storage, store at 20°C. Avoid repeat freeze-thaw cycles.

Precautions

PROP1 antibody - middle region is for research use only and not for use in diagnostic or therapeutic procedures.

PROP1 antibody - middle region - Protein Information**Name** PROP1**Function**

Possibly involved in the ontogenesis of pituitary gonadotropes, as well as somatotropes, lactotropes and caudomedial thyrotropes.

Cellular Location

Nucleus {ECO:0000255|PROSITE-ProRule:PRU00108}.

Tissue Location

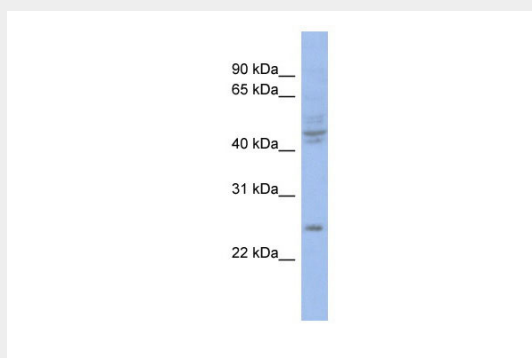
Expressed specifically in embryonic pituitary.

PROP1 antibody - middle region - Protocols

Provided below are standard protocols that you may find useful for product applications.

- [Western Blot](#)
- [Blocking Peptides](#)
- [Dot Blot](#)
- [Immunohistochemistry](#)
- [Immunofluorescence](#)
- [Immunoprecipitation](#)
- [Flow Cytometry](#)
- [Cell Culture](#)

PROP1 antibody - middle region - Images



WB Suggested Anti-PROP1 Antibody Titration: 0.2-1 μ g/ml

ELISA Titer: 1:1562500

Positive Control: COLO205 cell lysate

PROP1 is supported by BioGPS gene expression data to be expressed in COLO205

PROP1 antibody - middle region - References

Vieira, T.C., (2006) Endocrine 30 (3), 365-369 Reconstitution and Storage: For short term use, store at 2-8C up to 1 week. For long term storage, store at -20C in small aliquots to prevent freeze-thaw cycles.