

TRIM16 antibody - N-terminal region
Rabbit Polyclonal Antibody
Catalog # AI11465**Specification**

TRIM16 antibody - N-terminal region - Product Information

Application	WB
Primary Accession	O95361
Other Accession	NM_006470 , NP_006461
Reactivity	Human
Predicted	Human
Host	Rabbit
Clonality	Polyclonal
Calculated MW	64kDa KDa

TRIM16 antibody - N-terminal region - Additional Information**Gene ID** 10626**Alias Symbol** **EBBP****Other Names**

Tripartite motif-containing protein 16, Estrogen-responsive B box protein, TRIM16, EBBP

Format

Liquid. Purified antibody supplied in 1x PBS buffer with 0.09% (w/v) sodium azide and 2% sucrose.

Reconstitution & Storage

Add 100 ul of distilled water. Final anti-TRIM16 antibody concentration is 1 mg/ml in PBS buffer with 2% sucrose. For longer periods of storage, store at 20°C. Avoid repeat freeze-thaw cycles.

Precautions

TRIM16 antibody - N-terminal region is for research use only and not for use in diagnostic or therapeutic procedures.

TRIM16 antibody - N-terminal region - Protein Information**Name** TRIM16**Synonyms** EBBP**Function**

E3 ubiquitin ligase that plays an essential role in the organization of autophagic response and ubiquitination upon lysosomal and phagosomal damages. Plays a role in the stress-induced biogenesis and degradation of protein aggregates by regulating the p62-KEAP1-NRF2 signaling and particularly by modulating the ubiquitination levels and thus stability of NRF2. Acts as a scaffold protein and facilitates autophagic degradation of protein aggregates by interacting with p62/SQSTM1, ATG16L1 and LC3B/MAP1LC3B. In turn, protects the cell against oxidative stress-induced cell death as a consequence of endomembrane damage.

Cellular Location

Cytoplasm.

Tissue Location

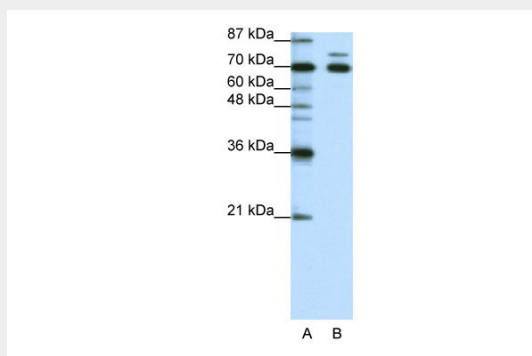
Highest levels found in testis, ovary, small intestine, colon, placenta, heart, skeletal muscle and mammary gland More highly expressed in the fetus than in the corresponding adult tissues.

Expressed in basal keratinocytes

TRIM16 antibody - N-terminal region - Protocols

Provided below are standard protocols that you may find useful for product applications.

- [Western Blot](#)
- [Blocking Peptides](#)
- [Dot Blot](#)
- [Immunohistochemistry](#)
- [Immunofluorescence](#)
- [Immunoprecipitation](#)
- [Flow Cytometry](#)
- [Cell Culture](#)

TRIM16 antibody - N-terminal region - Images

WB Suggested Anti-TRIM16 Antibody Titration: 1.25µg/ml

ELISA Titer: 1:62500

Positive Control: HepG2 cell lysate

TRIM16 antibody - N-terminal region - References

Beer, H.D., (2002) J. Biol. Chem. 277 (23), 20740-20749
Reconstitution and Storage: For short term use, store at 2-8°C up to 1 week. For long term storage, store at -20°C in small aliquots to prevent freeze-thaw cycles.