

ECD antibody - middle region
Rabbit Polyclonal Antibody
Catalog # AI11476**Specification**

ECD antibody - middle region - Product Information

Application	WB
Primary Accession	O95905
Other Accession	NM_007265 , NP_009196
Reactivity	Human, Rat, Rabbit, Pig, Goat, Horse, Bovine
Predicted	Human, Rabbit, Pig, Goat, Horse, Bovine, Dog
Host	Rabbit
Clonality	Polyclonal
Calculated MW	73kDa KDa

ECD antibody - middle region - Additional Information**Gene ID** 11319**Alias Symbol** **GCR2, HSGT1****Other Names**

Protein SGT1, hSGT1, Protein ecdysoneless homolog, Suppressor of GCR2, ECD, SGT1

Format

Liquid. Purified antibody supplied in 1x PBS buffer with 0.09% (w/v) sodium azide and 2% sucrose.

Reconstitution & Storage

Add 50 ul of distilled water. Final anti-ECD antibody concentration is 1 mg/ml in PBS buffer with 2% sucrose. For longer periods of storage, store at 20°C. Avoid repeat freeze-thaw cycles.

Precautions

ECD antibody - middle region is for research use only and not for use in diagnostic or therapeutic procedures.

ECD antibody - middle region - Protein Information**Name** ECD**Function**

Regulator of p53/TP53 stability and function. Inhibits MDM2- mediated degradation of p53/TP53 possibly by cooperating in part with TXNIP (PubMed: [16849563](http://www.uniprot.org/citations/16849563), PubMed: [23880345](http://www.uniprot.org/citations/23880345)). May be involved transcriptional regulation. In vitro has intrinsic transactivation activity enhanced by EP300. May be a transcriptional activator required for the expression of glycolytic genes (PubMed: [19919181](http://www.uniprot.org/citations/19919181)),

PubMed:9928932). Involved in regulation of cell cycle progression. Proposed to disrupt Rb-E2F binding leading to transcriptional activation of E2F proteins (PubMed:19640839). The cell cycle -regulating function may depend on its RUVBL1-mediated association with the R2TP complex (PubMed:26711270). May play a role in regulation of pre-mRNA splicing (PubMed:24722212). Participates together with DDX39A in mRNA nuclear export (PubMed:33941617).

Cellular Location

Cytoplasm. Nucleus Note=Predominantly is located in the cytoplasm

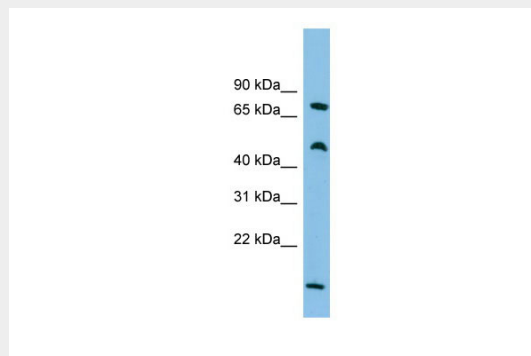
Tissue Location

Highly expressed in muscle and heart. Over- expressed in pancreatic and breast cancers

ECD antibody - middle region - Protocols

Provided below are standard protocols that you may find useful for product applications.

- [Western Blot](#)
- [Blocking Peptides](#)
- [Dot Blot](#)
- [Immunohistochemistry](#)
- [Immunofluorescence](#)
- [Immunoprecipitation](#)
- [Flow Cytometry](#)
- [Cell Culture](#)

ECD antibody - middle region - Images

WB Suggested Anti-ECD Antibody Titration: 0.2-1 µg/ml

ELISA Titer: 1:312500

Positive Control: ACHN cell lysate

ECD is supported by BioGPS gene expression data to be expressed in ACHN