

2700060E02Rik antibody - C-terminal region
Rabbit Polyclonal Antibody
Catalog # AI11514**Specification**

2700060E02Rik antibody - C-terminal region - Product Information

Application	WB
Primary Accession	O9COE8
Other Accession	NM_026528 , NP_080804
Reactivity	Human, Mouse, Rat, Rabbit, Zebrafish, Pig, Horse, Yeast, Bovine, Dog
Predicted Host	Mouse
Clonality	Rabbit
Calculated MW	Polyclonal 28kDa KDa

2700060E02Rik antibody - C-terminal region - Additional Information**Gene ID** 68045**Other Names**

UPF0568 protein C14orf166 homolog, CN166

Format

Liquid. Purified antibody supplied in 1x PBS buffer with 0.09% (w/v) sodium azide and 2% sucrose.

Reconstitution & Storage

Add 50 ul of distilled water. Final anti-2700060E02Rik antibody concentration is 1 mg/ml in PBS buffer with 2% sucrose. For longer periods of storage, store at 20°C. Avoid repeat freeze-thaw cycles.

Precautions

2700060E02Rik antibody - C-terminal region is for research use only and not for use in diagnostic or therapeutic procedures.

2700060E02Rik antibody - C-terminal region - Protein Information**Name** RTRAF {ECO:0000312|MGI:MGI:1915295}**Function**

Accessory subunit of the tRNA-splicing ligase complex that acts by directly joining spliced tRNA halves to mature-sized tRNAs by incorporating the precursor-derived splice junction phosphate into the mature tRNA as a canonical 3',5'-phosphodiester. RNA-binding protein involved in modulation of mRNA transcription by Polymerase II. Could also play a role in RNA transport.

Cellular Location

Nucleus {ECO:0000250|UniProtKB:Q9Y224}. Cytoplasm, cytosol {ECO:0000250|UniProtKB:Q9Y224}. Cytoplasm, perinuclear region

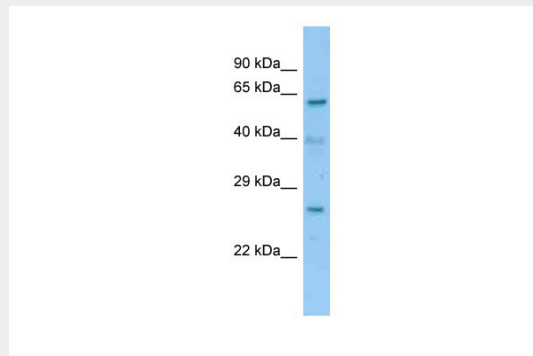
{ECO:0000250|UniProtKB:Q9Y224}. Cytoplasm, cytoskeleton, microtubule organizing center, centrosome {ECO:0000250|UniProtKB:Q9Y224}. Note=May localize at the centrosome during mitosis. Shuttles between the cytosol and the nucleus: enters into the nucleus in case of active transcription while it accumulates in cytosol when transcription level is low (By similarity)

2700060E02Rik antibody - C-terminal region - Protocols

Provided below are standard protocols that you may find useful for product applications.

- [Western Blot](#)
- [Blocking Peptides](#)
- [Dot Blot](#)
- [Immunohistochemistry](#)
- [Immunofluorescence](#)
- [Immunoprecipitation](#)
- [Flow Cytometry](#)
- [Cell Culture](#)

2700060E02Rik antibody - C-terminal region - Images



WB Suggested Anti-2700060E02Rik Antibody Titration: 1.0 µg/ml
Positive Control: Mouse Liver