

SCAPER antibody - N-terminal region
Rabbit Polyclonal Antibody
Catalog # AI11554**Specification**

SCAPER antibody - N-terminal region - Product Information

Application	WB
Primary Accession	Q9BY12
Other Accession	NM_020843 , NP_065894
Reactivity	Human, Mouse, Rat, Rabbit, Zebrafish, Pig, Horse, Bovine, Dog
Predicted	Human, Mouse, Rat, Zebrafish, Pig, Chicken, Bovine
Host	Rabbit
Clonality	Polyclonal
Calculated MW	158kDa KDa

SCAPER antibody - N-terminal region - Additional Information**Gene ID** 49855**Alias Symbol** [FLJ31533](#), [FLJ31953](#), [FLJ46212](#), [KIAA1454](#), [MSTP063](#), [ZNF291](#), [Zfp291](#)**Other Names**

S phase cyclin A-associated protein in the endoplasmic reticulum, S phase cyclin A-associated protein in the ER, Zinc finger protein 291, SCAPER, KIAA1454, ZNF291

Format

Liquid. Purified antibody supplied in 1x PBS buffer with 0.09% (w/v) sodium azide and 2% sucrose.

Reconstitution & Storage

Add 50 ul of distilled water. Final anti-SCAPER antibody concentration is 1 mg/ml in PBS buffer with 2% sucrose. For longer periods of storage, store at 20°C. Avoid repeat freeze-thaw cycles.

Precautions

SCAPER antibody - N-terminal region is for research use only and not for use in diagnostic or therapeutic procedures.

SCAPER antibody - N-terminal region - Protein Information**Name** SCAPER ([HGNC:13081](#))**Synonyms** KIAA1454, ZNF291**Function**

CCNA2/CDK2 regulatory protein that transiently maintains CCNA2 in the cytoplasm.

Cellular Location

Endoplasmic reticulum. Nucleus Note=Predominantly located in the endoplasmic reticulum, only a small portion is detected in the nucleus

Tissue Location

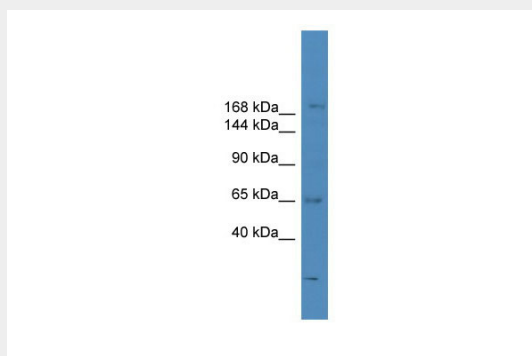
Widely expressed with high expression in testis. Isoform 1 is detected in various tissues, including retina, fetal and adult brain. Isoform 2 is expressed in the retina at high levels, and in the brain at very low levels (PubMed:28794130)

SCAPER antibody - N-terminal region - Protocols

Provided below are standard protocols that you may find useful for product applications.

- [Western Blot](#)
- [Blocking Peptides](#)
- [Dot Blot](#)
- [Immunohistochemistry](#)
- [Immunofluorescence](#)
- [Immunoprecipitation](#)
- [Flow Cytometry](#)
- [Cell Culture](#)

SCAPER antibody - N-terminal region - Images



WB Suggested Anti-SCAPER Antibody Titration: 0.2-1 µg/ml

ELISA Titer: 1:312500

Positive Control: ACHN cell lysate