

EBF1 Antibody
Rabbit Polyclonal Antibody
Catalog # AI11582**Specification**

EBF1 Antibody - Product Information

Application	WB, IHC
Primary Accession	Q9UH73
Reactivity	Human, Mouse, Rat, Rabbit, Zebrafish, Pig, Horse, Bovine, Dog
Predicted	Human, Mouse, Rabbit, Zebrafish, Pig, Chicken, Bovine
Host	Rabbit
Clonality	Polyclonal
Calculated MW	64kDa KDa

EBF1 Antibody - Additional Information**Gene ID** 1879

Alias Symbol **EBF, COE1, OLF1, O/E-1**
Other Names
Transcription factor COE1, O/E-1, OE-1, Early B-cell factor, EBF1, COE1, EBF

Format

Liquid. Purified antibody supplied in 1x PBS buffer with 0.09% (w/v) sodium azide and 2% sucrose.

Reconstitution & Storage

Add 50 ul of distilled water. Final anti-EBF1 antibody concentration is 1 mg/ml in PBS buffer with 2% sucrose. For longer periods of storage, store at 20°C. Avoid repeat freeze-thaw cycles.

Precautions

EBF1 Antibody is for research use only and not for use in diagnostic or therapeutic procedures.

EBF1 Antibody - Protein Information

Name EBF1

Synonyms COE1, EBF

Function

Key pioneer transcription factor of B-cell specification and commitment (PubMed:27807034). Recognizes variations of the palindromic sequence 5'-ATTCCCNNGGAATT-3'. Operates in a transcription factor network to activate B-cell-specific genes and repress genes associated with alternative cell fates. For instance, positively regulates many B- cell specific genes including BCR or CD40 while repressing genes that direct cells into alternative lineages, including GATA3 and TCF7 for the T-cell lineage. In addition to its role during lymphopoiesis, controls the thermogenic gene program in

adipocytes during development and in response to environmental cold (By similarity).

Cellular Location

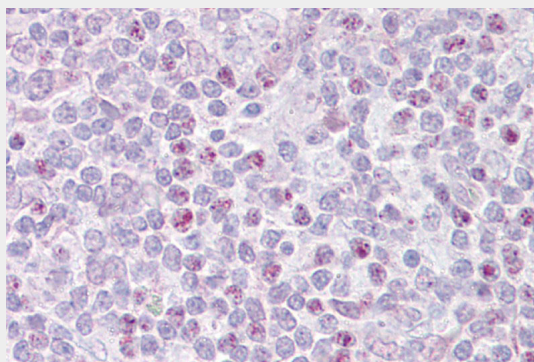
Nucleus.

EBF1 Antibody - Protocols

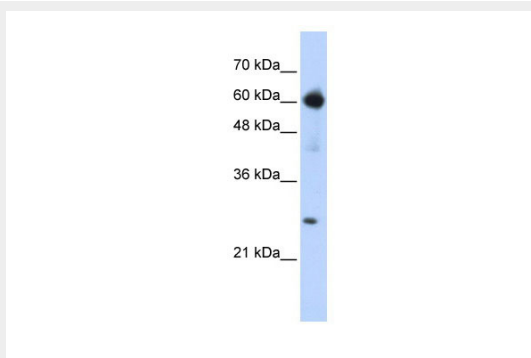
Provided below are standard protocols that you may find useful for product applications.

- [Western Blot](#)
- [Blocking Peptides](#)
- [Dot Blot](#)
- [Immunohistochemistry](#)
- [Immunofluorescence](#)
- [Immunoprecipitation](#)
- [Flow Cytometry](#)
- [Cell Culture](#)

EBF1 Antibody - Images



Immunohistochemistry with Thymus tissue at an antibody concentration of 5 μ g/ml using anti-EBF1 antibody (A111582)



WB Suggested Anti-EBF1 Antibody Titration: 0.2-1 μ g/ml

ELISA Titer: 1:312500

Positive Control: Transfected 293T