

**NR1I2 antibody - N-terminal region**  
**Rabbit Polyclonal Antibody**  
**Catalog # AI11609****Specification**

---

**NR1I2 antibody - N-terminal region - Product Information**

Application	WB
Primary Accession	<a href="#">O75469</a>
Other Accession	<a href="#">NM_003889</a> , <a href="#">NP_003880</a>
Reactivity	Human, Horse
Predicted	Human, Pig
Host	Rabbit
Clonality	Polyclonal
Calculated MW	50kDa KDa

**NR1I2 antibody - N-terminal region - Additional Information****Gene ID** 8856**Alias Symbol** BXR, ONR1, PAR, PAR1, PAR2, PARq, PRR, PXR, SAR, SXR**Other Names**

Nuclear receptor subfamily 1 group I member 2, Orphan nuclear receptor PAR1, Orphan nuclear receptor PXR, Pregnane X receptor, Steroid and xenobiotic receptor, SXR, NR1I2, PXR

**Format**

Liquid. Purified antibody supplied in 1x PBS buffer with 0.09% (w/v) sodium azide and 2% sucrose.

**Reconstitution & Storage**

Add 100 ul of distilled water. Final anti-NR1I2 antibody concentration is 1 mg/ml in PBS buffer with 2% sucrose. For longer periods of storage, store at 20°C. Avoid repeat freeze-thaw cycles.

**Precautions**

NR1I2 antibody - N-terminal region is for research use only and not for use in diagnostic or therapeutic procedures.

**NR1I2 antibody - N-terminal region - Protein Information****Name** NR1I2**Synonyms** PXR**Function**

Nuclear receptor that binds and is activated by variety of endogenous and xenobiotic compounds. Transcription factor that activates the transcription of multiple genes involved in the metabolism and secretion of potentially harmful xenobiotics, drugs and endogenous compounds. Activated by the antibiotic rifampicin and various plant metabolites, such as hyperforin, guggulipid, colupulone, and isoflavones. Response to specific ligands is species-specific. Activated by naturally occurring

steroids, such as pregnenolone and progesterone. Binds to a response element in the promoters of the CYP3A4 and ABCB1/MDR1 genes.

**Cellular Location**

Nucleus {ECO:0000255|PROSITE-ProRule:PRU00407, ECO:0000269|PubMed:12606758}

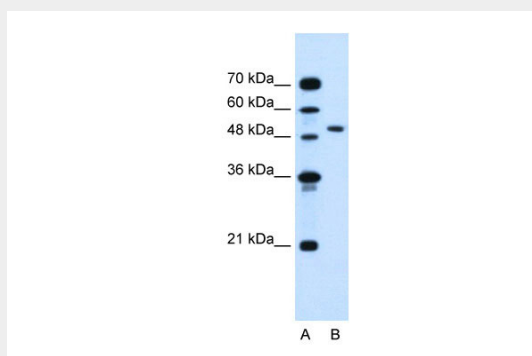
**Tissue Location**

Expressed in liver, colon and small intestine.

**NR1I2 antibody - N-terminal region - Protocols**

Provided below are standard protocols that you may find useful for product applications.

- [Western Blot](#)
- [Blocking Peptides](#)
- [Dot Blot](#)
- [Immunohistochemistry](#)
- [Immunofluorescence](#)
- [Immunoprecipitation](#)
- [Flow Cytometry](#)
- [Cell Culture](#)

**NR1I2 antibody - N-terminal region - Images**

WB Suggested Anti-NR1I2 Antibody Titration: 0.5µg/ml  
Positive Control: Jurkat cell lysate

**NR1I2 antibody - N-terminal region - References**

Dring, M.M., (2006) Gastroenterology 130 (2), 341-348  
Reconstitution and Storage: For short term use, store at 2-8C up to 1 week. For long term storage, store at -20C in small aliquots to prevent freeze-thaw cycles.