

**DLX1 antibody - N-terminal region**  
**Rabbit Polyclonal Antibody**  
**Catalog # AI11661****Specification**

---

**DLX1 antibody - N-terminal region - Product Information**

Application	<b>WB</b>
Primary Accession	<a href="#">P56177</a>
Other Accession	<a href="#">NM_178120</a> , <a href="#">NP_835221</a>
Reactivity	<b>Human, Mouse, Rat, Rabbit, Zebrafish, Pig, Horse, Bovine, Dog</b>
Predicted Host	<b>Mouse, Rat, Zebrafish, Chicken, Bovine</b>
Clonality	<b>Rabbit</b>
Calculated MW	<b>Polyclonal</b> <b>27kDa KDa</b>

**DLX1 antibody - N-terminal region - Additional Information****Gene ID** 1745**Other Names**

Homeobox protein DLX-1, DLX1

**Format**

Liquid. Purified antibody supplied in 1x PBS buffer with 0.09% (w/v) sodium azide and 2% sucrose.

**Reconstitution & Storage**

Add 50 ul of distilled water. Final anti-DLX1 antibody concentration is 1 mg/ml in PBS buffer with 2% sucrose. For longer periods of storage, store at 20°C. Avoid repeat freeze-thaw cycles.

**Precautions**

DLX1 antibody - N-terminal region is for research use only and not for use in diagnostic or therapeutic procedures.

**DLX1 antibody - N-terminal region - Protein Information****Name** DLX1**Function**

Plays a role as a transcriptional activator or repressor (PubMed:[14671321](http://www.uniprot.org/citations/14671321)). Inhibits several cytokine signaling pathways, such as TGF $\beta$ 1, activin-A/INHBA and BMP4 by interfering with the transcriptional stimulatory activity of transcription factors, such as MSX2, FAST2, SMAD2 and SMAD3 during hematopoietic cell differentiation (PubMed:[14671321](http://www.uniprot.org/citations/14671321)). Plays a role in terminal differentiation of interneurons, such as amacrine and bipolar cells in the developing retina (By similarity). Likely to play a regulatory role in the development of the ventral forebrain (By similarity). May play a role in craniofacial patterning and morphogenesis and may be involved

in the early development of diencephalic subdivisions (By similarity).

#### **Cellular Location**

Nucleus.

#### **Tissue Location**

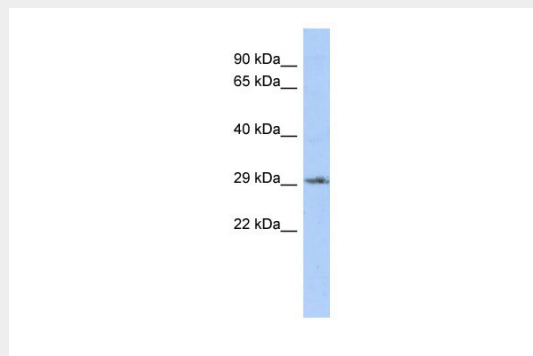
Expressed in hematopoietic cell lines.

### **DLX1 antibody - N-terminal region - Protocols**

Provided below are standard protocols that you may find useful for product applications.

- [Western Blot](#)
- [Blocking Peptides](#)
- [Dot Blot](#)
- [Immunohistochemistry](#)
- [Immunofluorescence](#)
- [Immunoprecipitation](#)
- [Flow Cytometry](#)
- [Cell Culture](#)

### **DLX1 antibody - N-terminal region - Images**



WB Suggested Anti-DLX1 Antibody Titration: 0.2-1  $\mu$ g/ml

ELISA Titer: 1:312500

Positive Control: THP-1 cell lysate

### **DLX1 antibody - N-terminal region - References**

Kahler, A.K., (er) Am. J. Med. Genet. B Neuropsychiatr. Genet. (2008) In press  
Reconstitution and Storage: For short term use, store at 2-8C up to 1 week. For long term storage, store at -20C in small aliquots to prevent freeze-thaw cycles.