

ZSCAN1 antibody - middle region
Rabbit Polyclonal Antibody
Catalog # AI11664**Specification**

ZSCAN1 antibody - middle region - Product Information

Application	WB
Primary Accession	O8NBB4
Other Accession	NM_182572 , NP_872378
Reactivity	Human
Predicted	Human
Host	Rabbit
Clonality	Polyclonal
Calculated MW	45kDa KDa

ZSCAN1 antibody - middle region - Additional Information**Gene ID** 284312**Alias Symbol** **FLJ33779, MGC104472, MZF-1, ZNF915****Other Names**

Zinc finger and SCAN domain-containing protein 1, ZSCAN1

Format

Liquid. Purified antibody supplied in 1x PBS buffer with 0.09% (w/v) sodium azide and 2% sucrose.

Reconstitution & Storage

Add 50 ul of distilled water. Final anti-ZSCAN1 antibody concentration is 1 mg/ml in PBS buffer with 2% sucrose. For longer periods of storage, store at 20°C. Avoid repeat freeze-thaw cycles.

Precautions

ZSCAN1 antibody - middle region is for research use only and not for use in diagnostic or therapeutic procedures.

ZSCAN1 antibody - middle region - Protein Information**Name** ZSCAN1**Function**

May be involved in transcriptional regulation.

Cellular Location

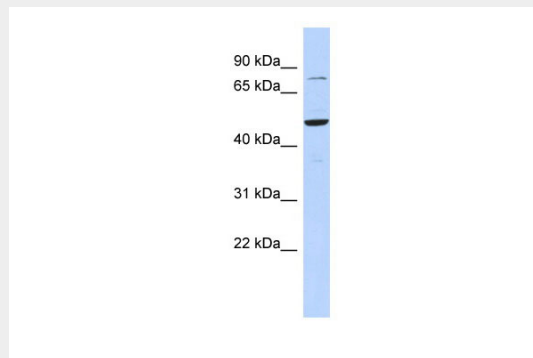
Nucleus {ECO:0000255|PROSITE-ProRule:PRU00187}.

ZSCAN1 antibody - middle region - Protocols

Provided below are standard protocols that you may find useful for product applications.

- [Western Blot](#)
- [Blocking Peptides](#)
- [Dot Blot](#)
- [Immunohistochemistry](#)
- [Immunofluorescence](#)
- [Immunoprecipitation](#)
- [Flow Cytometry](#)
- [Cell Culture](#)

ZSCAN1 antibody - middle region - Images



WB Suggested Anti-ZSCAN1 Antibody Titration: 0.2-1 μ g/ml

ELISA Titer: 1:312500

Positive Control: 721_B cell lysate

ZSCAN1 antibody - middle region - References

Gerhard,D.S., Genome Res. 14 (10B), 2121-2127 (2004)Reconstitution and Storage:For short term use, store at 2-8C up to 1 week. For long term storage, store at -20C in small aliquots to prevent freeze-thaw cycles.