

Mbd3 antibody - N-terminal region
Rabbit Polyclonal Antibody
Catalog # AI11692**Specification**

Mbd3 antibody - N-terminal region - Product Information

Application	WB
Primary Accession	O9Z2D8
Other Accession	NM_013595 , NP_038623
Reactivity	Human, Mouse, Rat, Dog
Predicted	Mouse
Host	Rabbit
Clonality	Polyclonal
Calculated MW	32kDa KDa

Mbd3 antibody - N-terminal region - Additional Information**Gene ID** 17192**Alias Symbol** AI181826, AU019209**Other Names**

Methyl-CpG-binding domain protein 3, Methyl-CpG-binding protein MBD3, Mbd3

Format

Liquid. Purified antibody supplied in 1x PBS buffer with 0.09% (w/v) sodium azide and 2% sucrose.

Reconstitution & Storage

Add 50 ul of distilled water. Final anti-Mbd3 antibody concentration is 1 mg/ml in PBS buffer with 2% sucrose. For longer periods of storage, store at 20°C. Avoid repeat freeze-thaw cycles.

Precautions

Mbd3 antibody - N-terminal region is for research use only and not for use in diagnostic or therapeutic procedures.

Mbd3 antibody - N-terminal region - Protein Information**Name** Mbd3**Function**

Acts as a component of the histone deacetylase NuRD complex which participates in the remodeling of chromatin (By similarity). Acts as transcriptional repressor and plays a role in gene silencing (By similarity). Does not bind methylated DNA by itself (PubMed:9774669). Binds to a lesser degree DNA containing unmethylated CpG dinucleotides (By similarity). Recruits histone deacetylases and DNA methyltransferases (By similarity).

Cellular Location

Nucleus. Chromosome {ECO:0000250|UniProtKB:O95983} Note=Detected on chromatin, at

promoter regions of active genes (By similarity). Nuclear, in discrete foci (PubMed:9774669)
{ECO:0000250|UniProtKB:O95983, ECO:0000269|PubMed:9774669}

Tissue Location

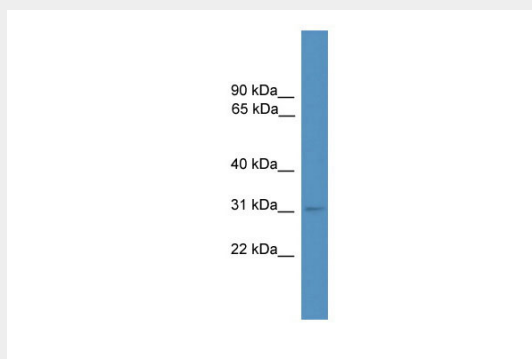
Highly expressed in brain, heart, kidney, liver, lung, skeletal muscle, spleen and testis. Detected at lower levels in embryonic stem cells.

Mbd3 antibody - N-terminal region - Protocols

Provided below are standard protocols that you may find useful for product applications.

- [Western Blot](#)
- [Blocking Peptides](#)
- [Dot Blot](#)
- [Immunohistochemistry](#)
- [Immunofluorescence](#)
- [Immunoprecipitation](#)
- [Flow Cytometry](#)
- [Cell Culture](#)

Mbd3 antibody - N-terminal region - Images



WB Suggested Anti-Mbd3 Antibody Titration: 0.2-1 µg/ml

ELISA Titer: 1:1562500

Positive Control: Mouse Heart