

**PRMT2 antibody - N-terminal region**  
**Rabbit Polyclonal Antibody**  
**Catalog # AI11698****Specification**

---

**PRMT2 antibody - N-terminal region - Product Information**

Application	WB, IHC
Primary Accession	<a href="#">P55345</a>
Other Accession	<a href="#">NM_001535</a> , <a href="#">NP_001526</a>
Reactivity	Human, Mouse, Rat, Rabbit, Pig, Horse, Bovine, Dog
Predicted Host	Human, Mouse, Rat, Horse, Bovine, Dog
Clonality	Rabbit
Calculated MW	Polyclonal 48kDa KDa

**PRMT2 antibody - N-terminal region - Additional Information****Gene ID 3275**Alias Symbol **HRMT1L1****Other Names**

Protein arginine N-methyltransferase 2, 2.1.1.-, Histone-arginine N-methyltransferase PRMT2, 2.1.1.125, PRMT2, HMT1, HRMT1L1

**Format**

Liquid. Purified antibody supplied in 1x PBS buffer with 0.09% (w/v) sodium azide and 2% sucrose.

**Reconstitution & Storage**

Add 100 ul of distilled water. Final anti-PRMT2 antibody concentration is 1 mg/ml in PBS buffer with 2% sucrose. For longer periods of storage, store at 20°C. Avoid repeat freeze-thaw cycles.

**Precautions**

PRMT2 antibody - N-terminal region is for research use only and not for use in diagnostic or therapeutic procedures.

**PRMT2 antibody - N-terminal region - Protein Information****Name** PRMT2**Synonyms** HMT1, HRMT1L1**Function**

Arginine methyltransferase that methylates the guanidino nitrogens of arginyl residues in proteins such as STAT3, FBL, histone H4. Acts as a coactivator (with NCOA2) of the androgen receptor (AR)-mediated transactivation. Acts as a coactivator (with estrogen) of estrogen receptor (ER)-mediated transactivation. Enhances PGR, PPARG, RARA-mediated transactivation. May inhibit NF-kappa-B transcription and promote apoptosis. Represses E2F1 transcriptional activity (in a RB1- dependent

manner). May be involved in growth regulation.

#### **Cellular Location**

[Isoform 1]: Cytoplasm. Nucleus. Note=Translocates from the cytoplasm to the nucleus, after hormone exposure. Excluded from nucleolus [Isoform PRMT2Beta]: Cytoplasm. Nucleus. Nucleus, nucleolus [Isoform PRMT2L2]: Cytoplasm. Nucleus Note=Predominantly cytoplasmic

#### **Tissue Location**

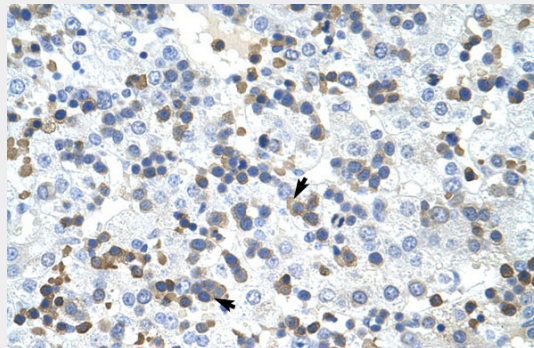
Widely expressed. Highly expressed in androgen target organs such as heart, prostate, skeletal muscle, ovary and spinal cord.

### **PRMT2 antibody - N-terminal region - Protocols**

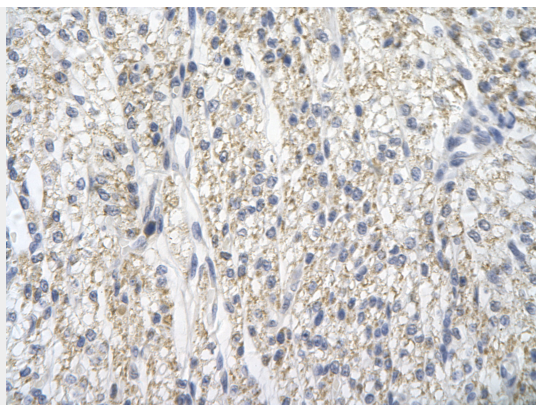
Provided below are standard protocols that you may find useful for product applications.

- [Western Blot](#)
- [Blocking Peptides](#)
- [Dot Blot](#)
- [Immunohistochemistry](#)
- [Immunofluorescence](#)
- [Immunoprecipitation](#)
- [Flow Cytometry](#)
- [Cell Culture](#)

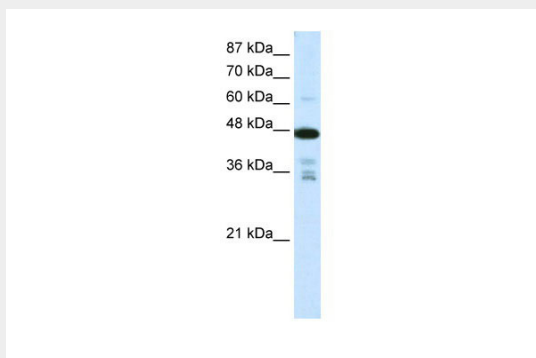
### **PRMT2 antibody - N-terminal region - Images**



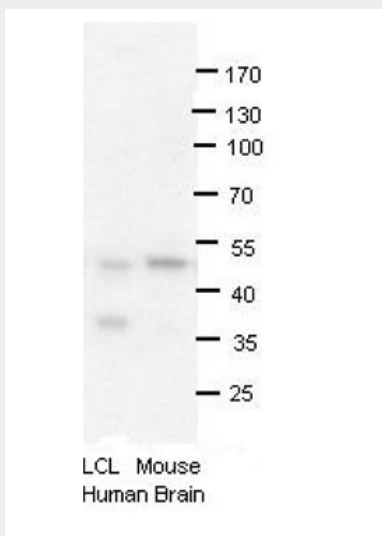
Rabbit Anti-PRMT2 Antibody  
Paraffin Embedded Tissue: Human Liver  
Cellular Data: Liver cells  
Antibody Concentration: 4.0-8.0 µg/ml  
Magnification: 400X



Rabbit Anti-PRMT2 Antibody  
Paraffin Embedded Tissue: Human cardiac cell  
Cellular Data: Epithelial cells of renal tubule  
Antibody Concentration: 4.0-8.0 µg/ml  
Magnification: 400X



WB Suggested Anti-PRMT2 Antibody Titration: 0.625µg/ml  
ELISA Titer: 1:1562500  
Positive Control: Jurkat cell lysate



PRMT2 antibody - N-terminal region (AI11698) validated by WB using human LCL and mouse brains at 1:1000.